



Beautiful Real Wood



Welcome to Broadleaf

Welcome to Broadleaf and our unique range of beautiful wood floors, doors and more.

Based in Wales and still family run, we are award winning manufacturers and retailers. We have just celebrated our 16th birthday and are proud to be known for quality, choice and expertise.

Beautiful Real Wood is at the heart of everything we do here at Broadleaf. Our timber is sustainably sourced from Europe's finest forests, carefully selected and expertly crafted to the highest standards.

As designers and makers we offer unrivalled choice: Most of our floors come a selection of widths, board formats and grades, our doors can be made to measure and finished to order, and if you can't find what you have in mind in our current collections we will be happy to come up with a bespoke solution be it a floor finish, door design or complete staircase!

Alongside our acclaimed signature collections this latest brochure includes plenty of exciting new floors. Reflecting current interior trends as well as classic styles they take full advantage of our innovative approach and superb manufacturing facilities here in West Wales.

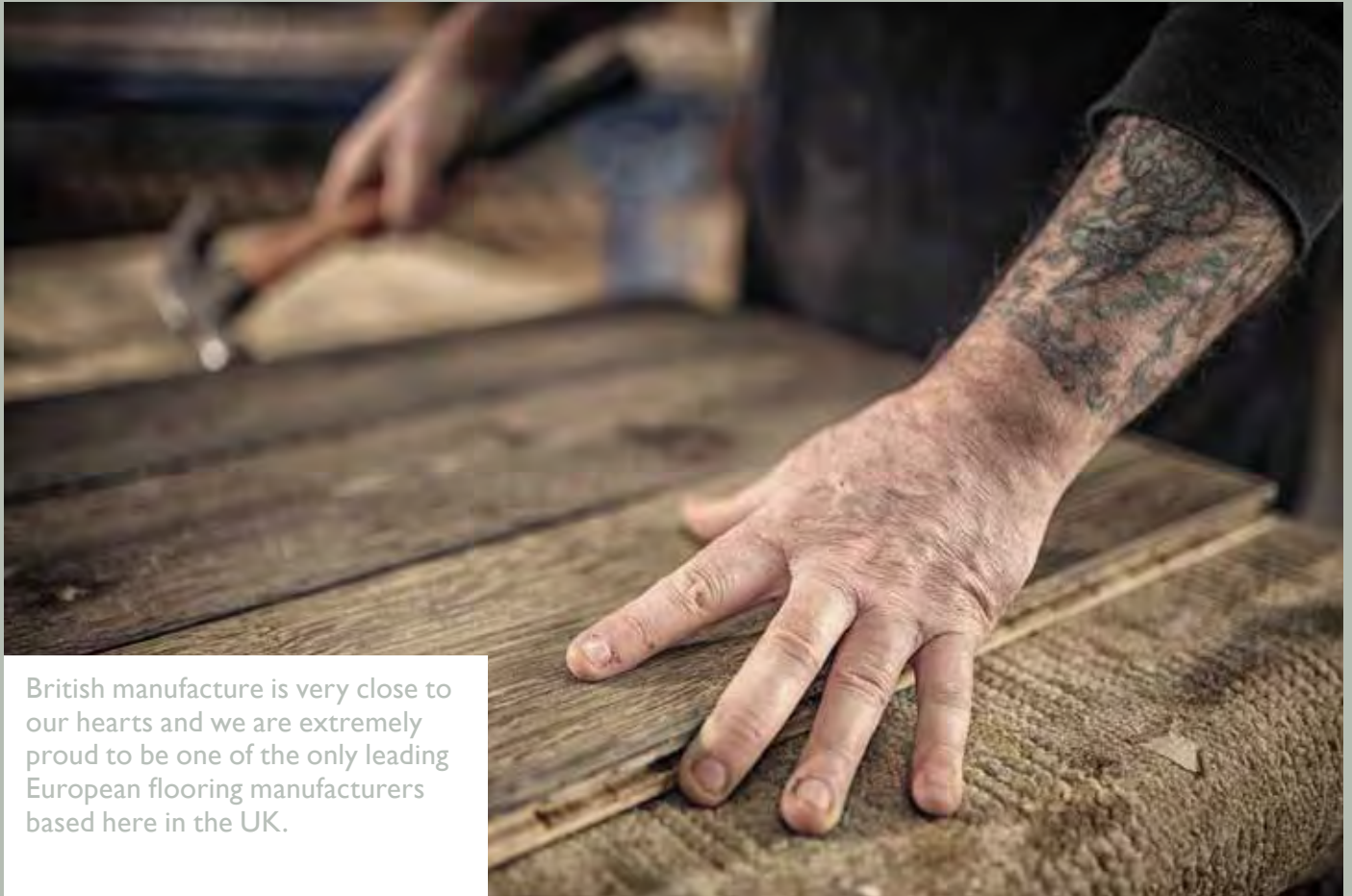
We hope that you will enjoy the brochure and find inspiration and solutions for your project. If possible, we would encourage you to visit one of our inspiring showrooms, but if not, we are happy to supply samples and our specialist team are on hand to offer honest, expert advice and any support you might need.

Broadleaf

Beautiful Real Wood



Made in the UK



British manufacture is very close to our hearts and we are extremely proud to be one of the only leading European flooring manufacturers based here in the UK.

Located on the edge of the stunning Brecon Beacons, just off the M4, our state of the art factory combines the best of traditional craftsmanship with the latest production and finishing technology. It has capacity to produce over 250,000m² of beautiful wood flooring annually as well as all manner of trims and other accessories. It also houses our comprehensive joinery workshop, where our time served craftsmen build bespoke doors, staircases and architectural design features, and our industry leading finishing facilities where we apply the unrivalled range of colours and textures that make our floors truly unique.



Contents

Floors



Beautiful real wood floors are inimitable. Synonymous with quality and style, they bring sensuous, natural warmth to any room. Versatile and hardwearing they only get better with age and their appeal is truly timeless.

3 Minute Guide	9
Broadleaf Colour Guide	10
Classic	14
Nuances	20
Artisan	30
Brushed & Burned	36
Heritage	42
Old House	48
Tempest	54
Metro	60
Coastal & Country	66
Painted & Distressed	72
Traditional Parquet	78
Original Vintage Parquet	80
Pullman Vintage Parquet	86
Nordic Parquet Collection	92

Doors



Doors are one of the most important architectural features of any building. They define its personality and are one of the easiest and most overlooked ways to transform the whole look and feel of a house.

Internal Plank	98
Internal Panelled	100
Door Finishes	102
External	104

Extras and Accessories



108

Our Extras & Accessories are all about beautiful details. Some, such as our elegant range of trims or beautiful selection of ironmongery will provide a final flourish and professional finish for our floors and doors.

<u>Stair Cladding and Components</u>	<u>110</u>
<u>Ironmongery</u>	<u>114</u>
<u>Skirting and Trims</u>	<u>118</u>
<u>Finishes and Fitting Products</u>	<u>119</u>

This brochure is split into key product sections, each followed by an information section which contains additional product details and important technical guidance.

We take great care to provide accurate descriptions of timber characteristics and variations, and to provide illustrative photos and we are confident that the brochure is a representative guide, but please bear in mind that timber is a natural product and there will always be some difference between printed copy and real product.

Design



120

Nothing captures the warmth and wonder of nature like wood, and nothing defines the spirit of your home like a unique piece of handcrafted joinery.

Be it a bold focal point or more subtle architectural feature, rustic or refined, its timeless organic beauty will enchant and impress.



Information



125

Floors	
<u>Essential Information</u>	<u>126</u>
<u>Installation Guide</u>	<u>128</u>
<u>Flooring Selector</u>	<u>134</u>
Doors	
<u>Internal Doors</u>	
<u>Essential Information</u>	<u>137</u>
<u>External Doors</u>	
<u>Essential Information</u>	<u>138</u>
Customer Services	140
<u>Samples</u>	
<u>Delivery</u>	
<u>Equipment Loan</u>	
<u>Advisory Service</u>	
Additional Information	140
<u>How to Order</u>	
<u>Recommended Fitters</u>	
<u>Sustainability</u>	

Floors

Beautiful wood floors are inimitable in the way they bring warmth, style and luxury to a room. Versatile, inviting, and with truly timeless appeal they are the natural choice for beautiful interiors.

Beautiful Broadleaf wood floors offer an unrivalled choice of colours, textures and styles that reflect classic taste and current trends. Expertly crafted from carefully selected timber and finished to the highest standards they really are quite unique.

Read our 3 minute guide and then browse by colour or collection as you prefer to find your perfect Broadleaf floor. Find ordering and installation guidance in the Information section.







Warm Oak

3 Minute Guide to Broadleaf Floors

Choosing a wood floor for the first time can be daunting, but hopefully this simple guide will make using our brochure and choosing your Broadleaf floor straight forward and stress free.

Grades

Grades define the extent of natural variation and knots in wood floors. There are no industry standard grades so each manufacturer must create their own. We have more grades than most so that we can offer floors with a more clearly defined style. Our 6 grades of plank and 3 grades of parquet are detailed in our Classic and Traditional Parquet collections, where they are available as unfinished floors in their own right.

Our other floors are made on these grades. We choose a standard option for each one which we feel best suits its style. This is noted either in the individual product description or the introduction to the collection and its characteristics in terms of knots and colour variation should be expected to be reflected in the finished floor. That said, darker finishes will typically lessen the level of natural variation visible, whereas lighter finishes tend to enhance it.

Where knots are a feature of a grade we describe them as small or large. Small knots will not normally exceed 25mm across their width and create a natural, warm looking floor. Large knots are those bigger than this and create a floor with a more rustic character.

If you would prefer your floor to be made on a different grade so that it has a more, or less, rustic look, this is not a problem. Speak to our team if this is of interest and they can advise on alternative options, how they might change the look of the floor and any price implications.

Although no description or image can be exhaustive and every wood floor is unique, taken together our product images and descriptions should give you a good overall idea of how a floor will look.

Types of board

Clients often ask about the difference between solid and engineered boards and which of these they need. In simple terms, solid boards are made from a single piece of timber whilst engineered boards have a multilayered construction. In the case of planks this gives them additional stability and opens up additional installation options. In the case of parquet, it makes very little difference to their stability or installation options.

So, if you choose a parquet floor, there is really no need to worry about the solid or engineered question at all.

If you choose a plank, whether you need a solid or an engineered board will depend on how and where you are looking to fit your floor. As our plank floors are all available in engineered options this won't limit your choice, so don't worry about it upfront. Just find the floor you like, and then use our Flooring Selector (PI34) or ask our staff to confirm which board type will work best for your installation.

You don't need to worry about an engineered option being a compromise in quality either – at Broadleaf we don't use a multi-layered construction as an excuse to use cheap materials or produce less beautiful floors. Our award winning Strata boards are made from 3 layers of oak so that they feel and wear just like a solid wood floor, and our Essentials boards have the same high quality oak in the top layer and a base made from premium hardwood ply.

Available options for each product are shown in the table under each product description.

Size

Most of our floors are available in a choice of widths. These are shown in the table under each product description and for parquet floors length is also shown here.

In the case of plank floors, different widths in the same format of board can be used together to create a mixed width floor if you wish.

Full dimension details and installation options for each variation can be found in our Flooring Selector (PI34).

Finishes

Most Broadleaf wood floors are supplied fully finished as standard, ready to walk on the day they are laid with no further finishing required. The rest have this as an optional extra, except for our Traditional Parquet floors which can only be sealed in situ after filling and sanding.

Finishing information for each collection is given in its introduction and confirmed under each product description by the following icons:

 Fully finished


 can be pre-finished to order

 Unfinished

 Semi finished - topcoat after fitting or order pre-finished as an extra,

All finished Broadleaf floors are sealed with high performance hardwax oils to create a natural look that is hard wearing, easy to maintain and can be locally repaired if required.

Underfloor Heating

Broadleaf have been successfully supplying wood floors for use over underfloor heating for 15 years and we are proud to say that all of the floors in this latest brochure have a choice of options that are underfloor heating compatible () subject to our installation guidance.

Details of exactly which options will work in this situation as well as installation choices can be found in our flooring selector on PI34. This includes solid options as, contrary to common myth, it is possible to successfully lay some solid wood floors over underfloor heating as long as they have been dried for this purpose.

In the case of solid planks this means an additional drying process known as re-kilning which attracts a small supplement. Please make sure that if you are intending to fit your wood floor over underfloor heating that you make our staff aware of this at the time of order so that they can ensure that you have selected a suitable product and that re-kilning is added to your order for any solid planks.



Colour guide



White



Whitewashed Oak
Page 22



Bleached Oak
Page 27



Bakers
Page 33



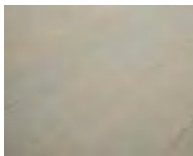
Porcelana
Page 41



Clifton
Page 49



Maestro
Page 56



Porcelain Oak
Page 61



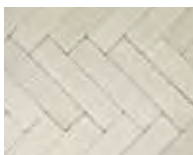
Iced Oak
Page 61



Limed & Washed
Page 68



Quayside
Page 70



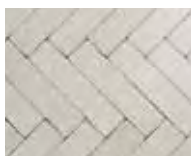
Hampton
Page 73



Westford
Page 75



Waterville
Page 75



Amherst
Page 76

Grey



Worn Oak
Page 28



Weavers
Page 33



Smithfield Oak
Page 43



Greenwich Oak
Page 46



Apsley
Page 51



Blakeney
Page 52



Mistral
Page 55



Bora
Page 55



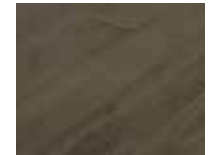
Etesian
Page 56



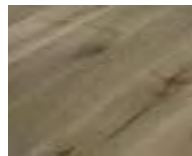
Sirocco
Page 59



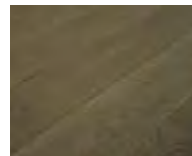
Solano
Page 59



Shamal
Page 59



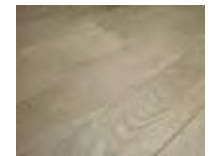
Seaside Grey
Page 67



Cloudy Grey
Page 67



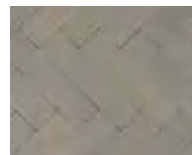
Weathered Grey
Page 67



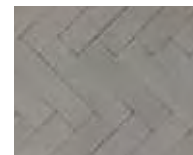
Washed Grey
Page 68



Shingle Grey
Page 68



Portland
Page 73



Littleton
Page 73



Providence
Page 75



Silvered Oak
Page 81



Worn Oak
Page 82



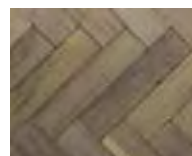
Santa Lucia
Page 87



Chamartin
Page 89



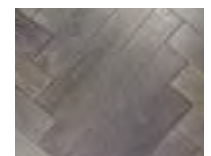
Waverley
Page 89



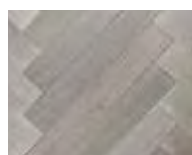
Bergen
Page 90



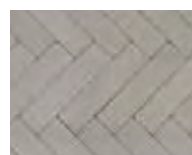
Kyrr
Page 93



Sten
Page 95



Kyst
Page 95



Montgomery
Page 96

Light



Railway Oak
Page 15



Cottage Oak
Page 15



Elegance Oak
Page 15



Gallery Oak
Page 18



Extra Wide Oak
Page 18



Superior Extra Wide
Page 18



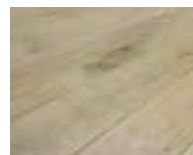
Natural Oak
Page 21



Warm Oak
Page 21



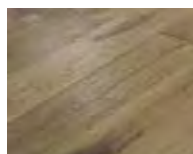
Aged Oak
Page 22



Nude Oak
Page 28



Tailors
Page 33



Slatters
Page 35



Millers
Page 35



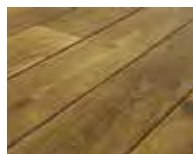
Clasico Light
Page 37



Arriba
Page 39



Esmerelda
Page 40



Venturosa
Page 41



Guildhall Oak
Page 45



Chiswick
Page 49



Hardwick
Page 52



Calima
Page 55



Oyster Light
Page 70



Cottage Oak
Page 79



Elegance Oak
Page 79



Gallery Oak
Page 79



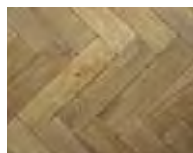
Nude Oak
Page 81



Aged Oak
Page 82



Classic Oak
Page 85



Connolly
Page 87



Montparnasse
Page 90



Gylden
Page 93



Mysa
Page 93



Skon
Page 95

Dark



Polished Oak
Page 21



Rich Oak
Page 22



Thatchers
Page 31



Hatters
Page 31



Masons
Page 35



Clasico Medium
Page 37



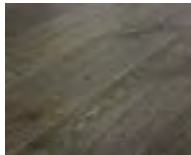
Barlovento
Page 39



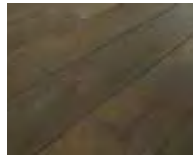
Sur de Lago
Page 40



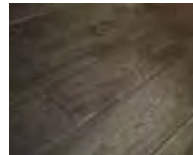
Pembroke Oak
Page 43



Trinity Oak
Page 45



Glamorgan Oak
Page 45



Trafalgar Oak
Page 46



Ivy Oak
Page 46



Osbourne
Page 49



Chartwell
Page 51



Quarry Bank
Page 51



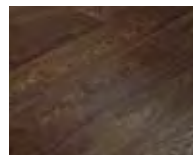
Gainsborough
Page 52



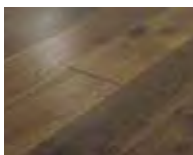
Diablo
Page 56



Sepia Fired
Page 62



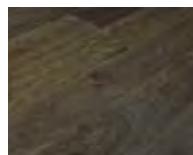
Davenport Oak
Page 62



Terra Fired
Page 65



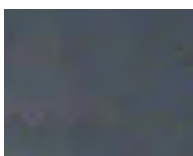
Sienna Fired
Page 65



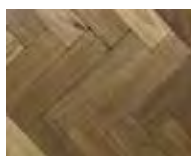
Grosvenor Oak
Page 65



Breakwater
Page 70



Burlington
Page 76



Smoked Oak
Page 81



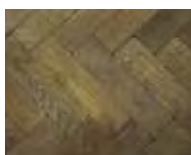
Rich Oak
Page 82



Dark Oak
Page 85



Merbau
Page 85



St Pancras
Page 89



Lichtenberg
Page 90

Black



Dark Oak
Page 27



Brewers
Page 31



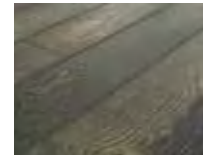
Clasico Dark
Page 37



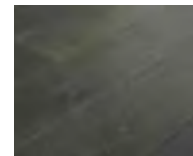
Carnero
Page 39



Mayan
Page 40



Casablanca
Page 41



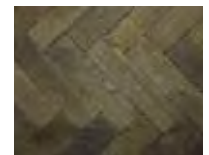
Grafton Oak
Page 43



Midnight Oak
Page 61



Raven Oak
Page 62



Gare Du Nord
Page 87

Classic

Our Classic Oak collection features 6 beautiful Oak floors, each capturing a different level of natural variation to create its own distinct look. Between them they cover the spectrum of styles from the truly rustic to terribly elegant and offer classic wood flooring options to suit every interior.

Classic Oak boards are supplied sanded, with any knots or splits that are a feature carefully filled. They will need to be finished after fitting with a suitable wood finish, or alternatively can be ordered prefinished in any of the tones from our Nuances collection for a small supplement.



Railway Oak

Named for its resemblance to original railway boards, once used to floor freight wagons across the globe, this stunning rustic floor features larger knots, splits, a fabulous varied grain and rich colour variation. It looks great contrasted with sleek modern furnishings as well as teamed with more traditional styling. Available in Strata only.

Type	Width
Strata	150 / 200



Cottage Oak

Full of character, Cottage Oak is ideally suited to relaxed and country style interiors. Featuring rich natural colour variation from cream to caramel, as well as lively figuring and a mix of large and small knots, it creates an inviting, gently rustic oak floor with a warm, comfortable feel. Available in a choice of Solid or Strata all oak engineered boards.

Type	Width
Solid	105 / 150 / 200
Strata	150 / 200



Elegance Oak

A wonderfully versatile oak floor featuring warm golden tones and smaller knots whose subtle personality can carry almost any style of décor. Elegance Oak is most often chosen for classic modern or period interiors. Available in a choice of Solid or Strata all oak engineered boards.

Type	Width
Solid	105 / 150 / 200
Strata	150 / 200





Cottage Oak



Classic Extra
Wide Oak



Gallery Oak

A stylish, sophisticated oak floor that is almost knot free and whose honeyed tones and pretty figuring create a subtle, luxurious feel that marries beautifully with more formal or minimal interiors. Available in a choice of Solid or Strata boards.

Type	Width
Solid	105 / 150
Strata	150 / 200





Classic Extra Wide Oak

The generous proportions of our Classic Extra Wide Oak boards are both imposing and indulgent. Featuring some larger knots and colour variation they create a stunning floor with a gently rustic look that remains elegant in feel and adapts beautifully to most interior styles.

Type	Width
Strata	250 / 300





Superior Extra Wide Oak

Superior Extra Wide Oak is a truly majestic floor that brings an instant sense of grandeur to any room. The impressive scale of the boards, combined with their sophisticated golden tones and smattering of smaller knots, creates a floor that is inherently luxurious and timelessly stylish.

Type	Width
Strata	250 / 300





Innovation and design

As manufacturers innovation and design are our lifeblood – from our own flooring profiles to our myriad of finishes our success and growth have been founded on our ability to constantly innovate and design new products, processes and machines.

Over the years we have been proudly responsible for a number of industry leading firsts, including solid flooring for underfloor heating, reproduction reclaimed flooring and an award winning all oak engineered board, not to mention the raft of textures and colours that make our finishes truly unique.



Originally inspired by beautiful pieces of furniture, our Nuances collection blurs the line between classic and contemporary style. A world away from conventional stained finishes these unique oak shades enhance rather than mask the beauty of the timber to create a natural look that is timeless and versatile.

All Nuances floors are finished with hard wearing, matt satin hardwax oil and are available in an impressive choice of solid and engineered plank and parquet. See our 3 minute guide for details of the different board types and our Flooring Selector for installation options.

Nuances



Natural Oak

Simple, classic and versatile the gently enhanced natural oak tones of this floor have timeless appeal and can be successfully teamed with almost any style of interior. Made as standard on our Cottage Oak or Classic Extra Wide Oak but also available on any of the floors in our Classic collection.

Type	Width
Solid	105 / 150 / 200
Strata	150 / 200 / 250 / 300
Essentials	190
Solid Chevron	90 x 510
Essentials Block	95 x 600
Essentials Chevron	95 x 505



Polished Oak

Inspired by an old polished oak table this indulgent chocolate toned floor has an inherently period feel but is commonly chosen to balance and contrast with bright contemporary interiors. Made as standard on our Cottage Oak or Classic Extra Wide Oak but also available on any of the floors in our Classic collection.

Type	Width
Solid	105 / 150 / 200
Strata	150 / 200 / 250 / 300
Essentials	190
Solid Chevron	90 x 510
Essentials Block	95 x 600
Essentials Chevron	95 x 505



Warm Oak

A wonderful soft shade that gently enriches the natural oak tones with hints of russet and is instantly reminiscent of turn of the century furniture mellowed by the sun. Made as standard on our Cottage Oak or Classic Extra Wide Oak but also available on any of the floors in our Classic collection.

Type	Width
Solid	105 / 150 / 200
Strata	150 / 200 / 250 / 300
Essentials	190
Solid Chevron	90 x 510
Essentials Block	95 x 600
Essentials Chevron	95 x 505





Rich Oak

One of our original Nuances collection and still one of the most popular; this luxuriant nut brown shade with just a hint of auburn brings a touch of grandeur to any room and is the perfect foil for opulent textiles and sumptuous colours. Made as standard on our Cottage Oak or Classic Extra Wide Oak but also available on any of the floors in our Classic collection.

Type	Width
Solid	105 / 150 / 200
Strata	150 / 200 / 250 / 300
Essentials	190
Solid Chevron	90 x 510
Essentials Block	95 x 600
Essentials Chevron	95 x 505



Whitewashed Oak

Clean and crisp, this pretty whitened floor has a fresh modern feel and works wonderfully as a platform for classic Scandinavian or New England style as well as sleek contemporary furnishings. Made as standard on our Elegance Oak or Classic Extra Wide Oak but also available on any of the floors in our Classic collection.

Type	Width
Solid	105 / 150 / 200
Strata	150 / 200 / 250 / 300
Essentials	190
Solid Chevron	90 x 510
Essentials Block	95 x 600
Essentials Chevron	95 x 505



Aged Oak

'Not too new looking but not too dark' if that is your brief then this is your floor. With just a light wash of colour to bring out the grain and enrich the natural oak tones it instantly has a slightly lived in feel from the day it is laid. Made as standard on our Cottage Oak or Classic Extra Wide Oak but also available on any of the floors in our Classic collection.

Type	Width
Solid	105 / 150 / 200
Strata	150 / 200 / 250 / 300
Essentials	190
Solid Chevron	90 x 510
Essentials Block	95 x 600
Essentials Chevron	95 x 505





Rich Oak



Nuances Choices

One of the best things about making floors is that we can offer more choice to our customers. To this end we are thrilled to introduce block and chevron parquet options to our Nuances collection which combined with our extensive selection of planks gives you 100 floors to choose from in this collection alone.

Dark Oak Essentials
Parquet Blocks



Nuances Planks

Nuances plank floors are available in a choice of widths and board types. Different widths of Solid planks and Strata all oak engineered planks can be used singly, or combined with other widths in the same format to create a mixed width floor. Essentials engineered planks are available in a single width.

Narrow boards will make a smaller room appear larger and wider boards will add intimacy to a larger space. A mixed width floor will create a more traditional looking floor and make wide boards appear even wider.

Type	Width
Solid	105 / 150 / 200
Strata	150 / 200 / 250 / 300
Essentials	190



Nuances Parquet Blocks

Nuances parquet blocks come in our Essentials engineered format and are ideally suited to a classic herringbone design. A small micro bevel on all sides subtly defines each block and combined with their elegant proportions creates a streamlined, modern looking parquet floor.

Parquet blocks laid in a herringbone design are a great way to visually rebalance a very rectangular room –align the 'W' of the pattern with the shortest wall to make the room look more 'square'.

Type	Width
Essentials Block	95 x 600



Nuances Chevron Parquet

Nuances chevron parquet is available in a choice of Solid or Essentials engineered options, both of which feature a small micro bevel on all sides that subtly defines each element once fitted. Our chevron parquet is cut on a 45° angle to form an elegant chevron design.

Chevrons can be laid at an angle to the walls of a room to visually expand it but are always shown to their best advantage when laid at between 45° – 90° to the primary light source. Adding a border creates a more traditional look.

Type	Width
Solid Chevron	90 x 510
Essentials Chevron	95 x 505





Bleached Oak



Bleached Oak

A subtle lightened floor with a hint of warm cream that is perfect for any room you want to be calm, light and airy. Perfect for an English country feel or to add a contemporary twist to more classic interiors. Made as standard on our Elegance Oak or Classic Extra Wide Oak but also available on any of the floors in our Classic collection.

Type	Width
Solid	105 / 150 / 200
Strata	150 / 200 / 250 / 300
Essentials	190
Solid Chevron	90 x 510
Essentials Block	95 x 600
Essentials Chevron	95 x 505



Dark Oak

Inky in tone, understated in style this floor is deep in hue and yet surprisingly light in feel. Wonderfully adaptable it combines equally well with traditional gothic and tudor inspired interiors or a lighter contemporary look. Made as standard on our Cottage Oak or Classic Extra Wide Oak but also available on any of the floors in our Classic collection.

Type	Width
Solid	105 / 150 / 200
Strata	150 / 200 / 250 / 300
Essentials	190
Solid Chevron	90 x 510
Essentials Block	95 x 600
Essentials Chevron	95 x 505



Board Types Explained

Strata is our 100% oak engineered plank. Essentials engineered planks and parquet are made on premium quality ply. See our 3 minute guide on P9 for more details



Nude Oak

As nature intended – only better. The untouched look of bare wood in a fully sealed floor designed to cope with the demands of modern living. Many have tried to perfect this combination – we have succeeded. Created on our Cottage Oak or Classic Extra Wide Oak for a gently rustic look that suits naturally inspired rooms of all styles it is also available on any of our Classic oak floors.

Type	Width
Solid	105 / 150 / 200
Strata	150 / 200 / 250 / 300
Essentials	190
Solid Chevron	90 x 510
Essentials Block	95 x 600
Essentials Chevron	95 x 505



Worn Oak

A subtle tinge of deep grey picks out the grain of this floor and deepens its natural tones to a soft bronze to create an attractively worn look that is both timeless and versatile whatever your style. Made as standard on our Cottage Oak or Classic Extra Wide Oak but also available on any of the floors in our Classic collection.

Type	Width
Solid	105 / 150 / 200
Strata	150 / 200 / 250 / 300
Essentials	190
Solid Chevron	90 x 510
Essentials Block	95 x 600
Essentials Chevron	95 x 505



Which board do I need?
See our 3 minute guide on P9 for details of board types and our Information Section on P125 for installation guidance



Nude Oak

Our exciting Artisan collection was inspired by our fabulously rustic Railway Oak whose hallmark knots, splits and colour variation is the perfect canvas for floors that are all about rich texture and warm tones.

Designed with traditional, industrial and rustic interiors in mind, the floors in this collection feature an authentically brushed surface to emphasise their grain. They are made on our award winning Strata all oak engineered boards and finished with hardwearing, natural looking, matt satin hardwax oil.

Artisan



Brewers

Though we say it ourselves we are quite proud of our Brewers Oak, which has been cleverly designed to mirror a pitch treated floor sanded back to reveal the original oak beneath. Black in tone but light in feel this is a reclaimed style floor with a modern industrial feel.

Type	Width
Strata	150 / 200 / 300



Thatchers

A gorgeous nut brown floor enhanced by the natural colour variation of the Railway grade and a beautiful darker grain. Easily matched with almost any style of décor or colour scheme we are sure that Thatchers will quickly be a member of the Broadleaf top 10.

Type	Width
Strata	150 / 200 / 300



Hatters

Unashamedly traditional in style, our Hatters Oak is an indulgent blend of polished chestnut tones and gently worn edges that set off its richly textured surface to perfection and mimic the look and feel of C16th furniture.

Type	Width
Strata	150 / 200 / 300





Weavers



Tailors

Simple and uncomplicated, Tailors Oak has no added colour; just a hardwearing matt satin finish that enhances its spectrum of natural tones and catches the light to highlight its grain. A timeless, adaptable rustic floor that suits almost any interior.

Type	Width
Strata	150 / 200 / 300



Weavers

A traditionally styled floor with a surprisingly modern feel, Weavers Oak combines the natural golden hues of oak with a deep grey that picks out its grain and creates energy and interest without drama.

Type	Width
Strata	150 / 200 / 300

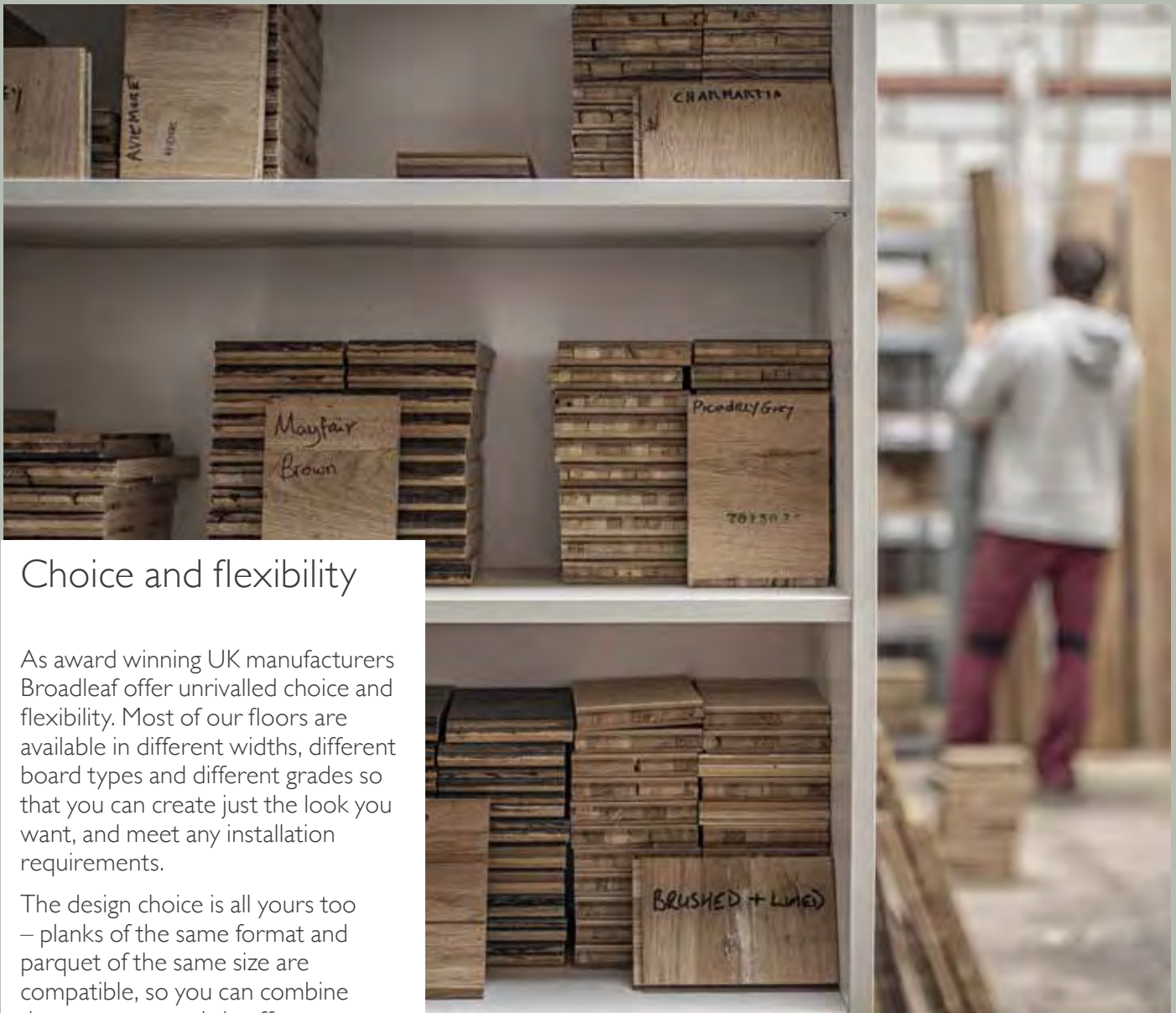


Bakers

The soft white of our Bakers finish over the warm and varied grain of the Railway Oak beneath creates an almost smoky effect that is evocative of summer clouds. It creates a pretty, rustic floor that works beautifully as a platform for a wide range of paler interior styles.

Type	Width
Strata	150 / 200 / 300





Choice and flexibility

As award winning UK manufacturers Broadleaf offer unrivalled choice and flexibility. Most of our floors are available in different widths, different board types and different grades so that you can create just the look you want, and meet any installation requirements.

The design choice is all yours too – planks of the same format and parquet of the same size are compatible, so you can combine them to create subtle effects or dramatic feature floors. We can also put plank finishes onto parquet and vice versa for most of our floors, even where this is not standard, so that you can keep the same finish throughout but change the design.

So, if the floor that you like is a little rustic for your taste, or on plank but you are looking for parquet, don't be put off, just speak to one of our showrooms about other options.





Slaters

The perfect choice for a subtly reclaimed look, the warm honeyed tones of our Slaters Oak picked out with soft grey have the look and feel of boards gently worn over time and then sanded back for the next generation.

Type	Width
Strata	150 / 200 / 300



Masons

If you were going to call any of our Artisan floors sophisticated it would be this one – sultry chocolate tones with a subtly accentuated paler grain and probably the most contemporary looking floor of the collection.

Type	Width
Strata	150 / 200 / 300



Millers

Washed with our well loved Aged finish, this floor has an instantly lived in feel and a pretty emphasised grain that is sure to make it a perennial favourite. The perfect backdrop for a traditional look or bolder more industrial décor.

Type	Width
Strata	150 / 200 / 300



An original in its own right our Brushed and Burned Oak is the ultimate reclaimed style wood floor. Created using a unique process that authentically ages each board in the same way as the natural passage of time it has a softly textured surface with a rich patina and natural darkening from edge to centre.

All boards in this range are available in a choice of solid and engineered planks and finished with hardwearing, matt satin hardwax oil. They are made as standard on our Cottage or Classic Extra Wide Oak but if you prefer they can also be ordered on other grade from our Classic collection. See our 3 minute guide for details of the different board types and our Flooring Selector for installation options.

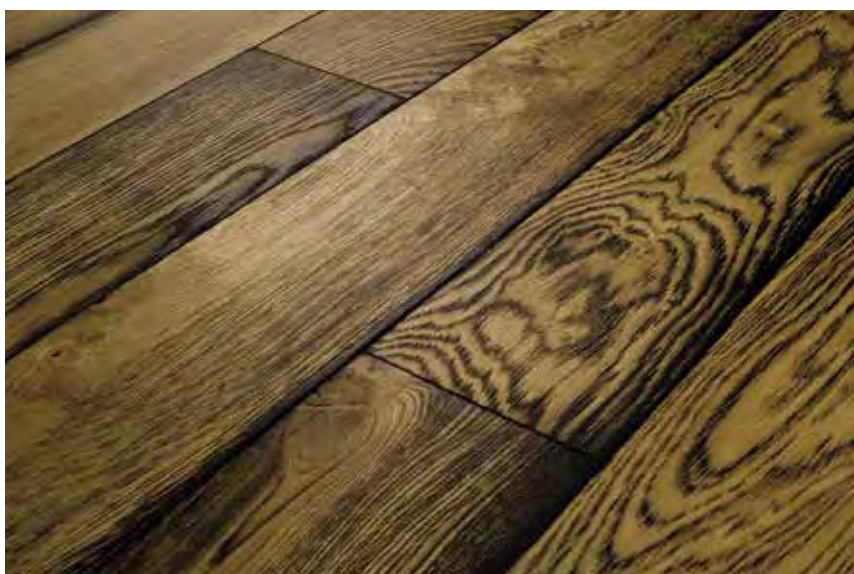
Brushed & Burned



Clasico Light

A gently aged reclaimed style floor perfect for a Victorian or refurbished look with boards ranging from those only slightly burned at the edges to those with definite burning at the edges and traces of burning towards the centre enhanced by our hard wearing Natural finish.

Type	Width
Solid	105 / 150 / 200
Strata	150 / 200 / 250 / 300



Clasico Medium

A more distinctly aged floor that still retains plenty of golden tones, with boards ranging from those with definite burning at the edges and traces of burning towards the centre to those with burning across most of their face. Sealed with our low maintenance Natural finish it creates a beautiful reclaimed oak look.

Type	Width
Solid	105 / 150 / 200
Strata	150 / 200 / 250 / 300



Clasico Dark

Perfect if you are looking for a genuine 200 year old feel these stunning boards have a substantial degree of burning across most of their face which is enriched with our beautiful Natural finish to create a dramatic floor that always begs the question – ‘Is it original?’

Type	Width
Solid	105 / 150 / 200
Strata	150 / 200 / 250 / 300





Clasico Dark



Arriba

Created on our Light Brushed & Burned board, enhanced with a subtle wash of colour to soften its natural golden tones and highlight the pretty figuring in the grain of the timber, Arriba is a subtle, less newly refurbished looking reclaimed style floor.

Type	Width
Solid	105 / 150 / 200
Strata	150 / 200 / 250 / 300



Barlovento

A clever combination of our Medium Brushed & Burned board and an inviting chestnut brown overtone which reduces the visible contrast between the burned and unburned areas to create a rich yet subtly aged oak floor. Perfect for renovations or to add an instant touch of history to a newly built interior.

Type	Width
Solid	105 / 150 / 200
Strata	150 / 200 / 250 / 300



Carnero

A subtle, less dramatic interpretation of our Dark Brushed & Burned board with less contrast between the richly burned areas and those retaining their natural tones and creating a softly toned, authentic centuries old feel that marries as well with contemporary décor as traditional.

Type	Width
Solid	105 / 150 / 200
Strata	150 / 200 / 250 / 300





Esmerelda

A blend of pretty caramel tones over our Light Brushed & Burned board creates this warm, delicately aged board that is instantly familiar and beautifully versatile. We expect this new addition to become a firm favourite for properties of all styles.

Type	Width
Solid	105 / 150 / 200
Strata	150 / 200 / 250 / 300

U P



Sur De Lago

Our Medium Brushed & Burned board balanced with a fabulous cocoa brown shade that brings out the grain of the timber to perfection and results in a richly toned, gently aged oak floor that would look equally at home in a country house hotel or a harbourside penthouse.

Type	Width
Solid	105 / 150 / 200
Strata	150 / 200 / 250 / 300

U P



Mayan

A Dark Brushed and Burned floor overlaid with warm copper tones that is striking yet inviting and looks particularly impressive in large areas with plenty of light to catch the surface and pick out the grain or contrasted with sleek contemporary furnishings.

Type	Width
Solid	105 / 150 / 200
Strata	150 / 200 / 250 / 300

U P



Casablanca

Dark Brushed and Burned with a subtly whitened grain that highlights the pretty figuring of its softly textured surface and creates a floor with a lighter, more modern feel and an attractive multidimensional tone. A great way to add a contemporary twist to a traditional space.

Type	Width
Solid	105 / 150 / 200
Strata	150 / 200 / 250 / 300



Porcelana

A pretty white wash over our Medium Brushed & Burned board gives it a fresh, light feel and creates a thoroughly modern looking reclaimed style floor that is a perfect backdrop for contemporary country or shabby chic interiors.

Type	Width
Solid	105 / 150 / 200
Strata	150 / 200 / 250 / 300



Venturosa

An enhanced version of our Clasico light, with added surface texture to further bring out the fabulous figuring and create an almost driftwood look and feel that is wonderfully tactile and naturally anti slip.

Type	Width
Solid	105 / 150 / 200
Strata	150 / 200 / 250 / 300



Our Heritage Oak floors authentically recreate the unique character of beautiful oak floors that have mellowed with the passage of time. Wonderfully versatile, they are as happily used to match or mimic original boards in a period property as to add character and contrast to a contemporary one.

The floors in this collection are available in a choice of solid or strata engineered boards and finished with durable, natural looking hardwax oil. They are made on our gently rustic Cottage Oak or Classic Extra Wide Oak as standard and other grades are available on request.

Heritage



Smithfield Oak

An exciting mix of smoky grey, warm bronze and soft pearly tones that follow the natural variation of the timber; this is an authentic yet distinctive vintage oak floor that looks fabulous with classic modern styling and period architecture.

Type	Width
Solid	105 / 150 / 200
Strata	150 / 200 / 250 / 300



Pembroke Oak

A vibrant and inviting floor full of the rich auburn tones of timber long mellowed by a warm summer sun and with a slight surface texture to add interest and bring out the grain. Combine these boards with strong colours or simple whites to stunning effect in any style of interior.

Type	Width
Solid	105 / 150 / 200
Strata	150 / 200 / 250 / 300



Grafton Oak

Soft charcoal with just a hint of bronze over a lightly brushed surface to highlight the grain, that is then carefully picked out with a gently contrasting clay tone to create a stunning multidimensional floor with a vintage look and a modern feel.

Type	Width
Solid	105 / 150 / 200
Strata	150 / 200 / 250 / 300





Guildhall Oak



Trinity Oak

A clever combination of subtle black and brown shades with a gentle surface texture gives this floor an intense yet naturally worn look and feel that could easily be mistaken for original boards and forgives a myriad of sins in terms of wear and tear.

Type	Width
Solid	105 / 150 / 200
Strata	150 / 200 / 250 / 300



Guildhall Oak

Warm, familiar, versatile – these are most common reactions we have to this floor. A refreshing take on the vintage look its gently enriched tones and slight surface texture create a subtle character and sense of place.

Type	Width
Solid	105 / 150 / 200
Strata	150 / 200 / 250 / 300



Glamorgan Oak

The surface of this floor is lightly brushed, then carefully coloured to resemble polished mahogany before it is gently aged to create an authentic worn look that often leads people to think it is a reclaimed board whose surface has evolved over several decades.

Type	Width
Solid	105 / 150 / 200
Strata	150 / 200 / 250 / 300





Trafalgar Oak

Richly toned with a slight surface texture to accentuate the grain, this beautiful floor creates an inherent sense of grandeur and history. It blends seamlessly into traditional interiors and is an excellent choice for more modern properties to add character and balance.

Type	Width
Solid	105 / 150 / 200
Strata	150 / 200 / 250 / 300



Greenwich Oak

In the spirit of bare oak, never sealed and well worn, these boards offer a tantalising mix of muted greys and gentle golden tones and produce a pretty, less intense vintage floor that works wonderfully with rustic contemporary styling.

Type	Width
Solid	105 / 150 / 200
Strata	150 / 200 / 250 / 300



Ivy Oak

Originally designed for the renowned restaurant after which it is named, this is a floor full of warm burnished tones with an elegant, antique feel. Versatile and timeless it is as well matched with rich velvets as crisp white linens.

Type	Width
Solid	105 / 150 / 200
Strata	150 / 200 / 250 / 300





Trafalgar Oak

Old House

In days gone by, wood floors were made using rustic machinery that left saw marks across their surface. This was the inspiration for our Old House collection, characterised by these saw marks, which we now add board by board as modern machining leaves them beautifully flat! We also add texture along the grain to soften the saw marks and create a more sophisticated floor with a rich patina.

Most Old House floors are made on our gently rustic Cottage Oak or Classic Extra Wide Oak as standard with other grades are available on request. Chartwell and Clifton are made on Elegance or Classic Extra Wide Oak. Choose from solid or strata engineered boards, all of which are finished with durable, natural looking hardwax oil. The different board types are explained in our 3 minute guide & installation options in our Flooring Selector.



Clifton

A slightly rustic floor that is still inherently elegant, Clifton combines soft pebble background tones with a pretty white grain that picks out the Old House texture beautifully to create a calm, relaxed floor with a seaside or spa like feel. Team with neutrals or more muted shades for a natural modern look.

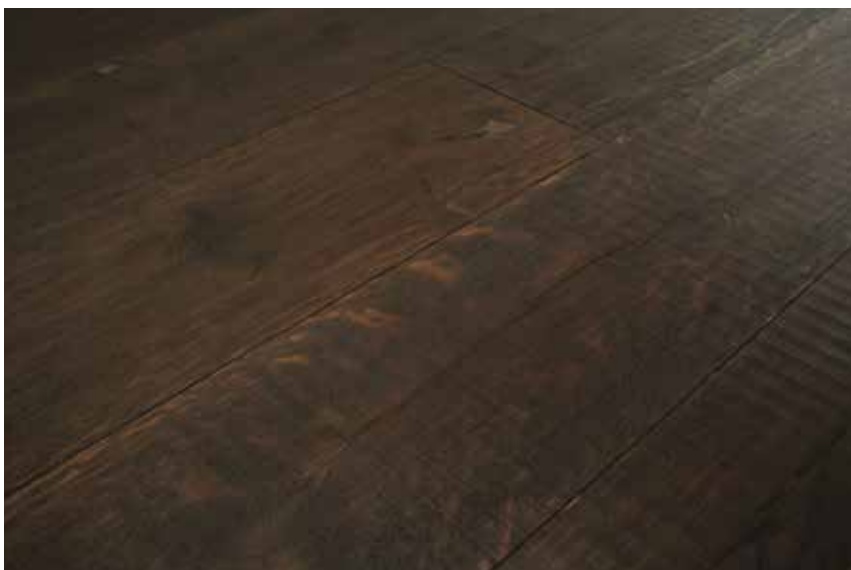
Type	Width
Solid	105 / 150 / 200
Strata	150 / 200 / 250 / 300



Chiswick

Sealed with our unique Nude finish this fabulous bare looking Old House board keeps things wonderfully simple and has a light, modern feel and matt satin look that is perfect for contemporary country interiors.

Type	Width
Solid	105 / 150 / 200
Strata	150 / 200 / 250 / 300



Osbourne

Intense chocolate tones with just a hint of copper and amethyst are the hallmark of this wonderful, traditional looking floor whose matt satin finish ensures that it doesn't absorb too much light and has a rich rather than dark look and feel.

Type	Width
Solid	105 / 150 / 200
Strata	150 / 200 / 250 / 300





Apsley



Apsley

Taking inspiration from painstakingly soap scrubbed floors of old, Apsley boards are washed with soft pinkish grey, highlighted with a slightly lighter grain, and have a matt satin finish. Pale, pretty and subtle this floor is perfect for light, vintage inspired interiors.

Type	Width
Solid	105 / 150 / 200
Strata	150 / 200 / 250 / 300



Quarry Bank

You can just imagine this as an original factory floor, so it seemed entirely natural to name it after an old cotton mill. Our unique Brushed & Burned process ages the boards authentically from edge to centre, varying from board to board to create the beautifully aged look of a reclaimed floor, picking out the Old House texture to stunning effect whilst retaining an overall golden tone.

Type	Width
Solid	105 / 150 / 200
Strata	150 / 200 / 250 / 300



Chartwell

Evocative of gently roasted coffee beans, this floor is characterised by a gentle spectrum of soft, toasted tones which are subtly highlighted by the distinctive texture of the Old House collection. A perfect contrast to chic contemporary styling with a matt satin finish.

Type	Width
Solid	105 / 150 / 200
Strata	150 / 200 / 250 / 300





Blakeney

The intense smokey greys and soft clay overtones of our Blakeney boards create a rustic vintage look that is right on trend and ideal for either setting off contemporary furnishings or bringing a period interior subtly up to date. These boards have a matt finish.

Type	Width
Solid	105 / 150 / 200
Strata	150 / 200 / 250 / 300



Hardwick

Classic and inviting the warm golden tones and matt satin finish of the Hardwick floor show off the fabulous surface texture and patina of the Old House board beautifully and create an attractive, subtly aged variation of the archetypal oak floor.

Type	Width
Solid	105 / 150 / 200
Strata	150 / 200 / 250 / 300



Gainsborough

Full of gently faded black and brown tones that create a naturally well worn look you could be forgiven for thinking this floor was already several centuries old. With a matt satin finish that just catches the light it adds a sense of character to any room and is at home anywhere from country house to country pub.

Type	Width
Solid	105 / 150 / 200
Strata	150 / 200 / 250 / 300





Blakeney

Driftwood, with its tactile feel and spectacular grain patterns was the inspiration for our Tempest collection. The surface of these floors is naturally eroded by sand in the same way to create an almost sensual texture to which we add hand applied layers of organic colour to build their luxurious multidimensional tones.

Tempest floors are available in a choice of solid or strata engineered boards. All are made on Cottage or Classic Extra Wide Oak as standard, except Maestro which is made on Elegance or Classic Extra Wide Oak.

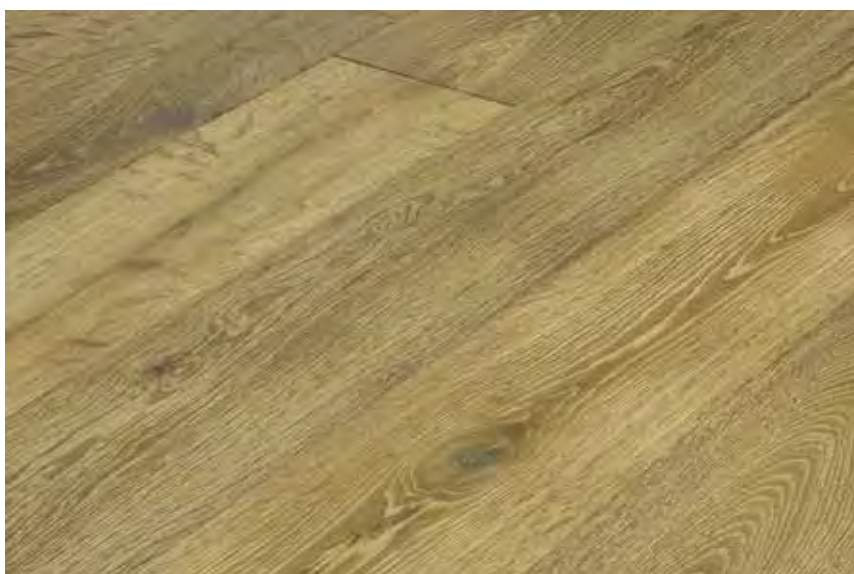
Tempest



Mistral

The first of the Tempest collection that we designed and still causing a stir with its soft oyster tones and pretty chalky coloured grain, Mistral is a striking yet subtle floor full of rustic sophistication with a matt satin finish.

Type	Width
Solid	105 / 150 / 200
Strata	150 / 200 / 250 / 300



Calima

Like a handful of warm sand this richly textured floor is an inviting mix of honeyed tones picked out with a lighter grain and a pretty matt satin finish. Calima is a subtle yet distinctive floor that blends beautifully with a wide spectrum of interiors.

Type	Width
Solid	105 / 150 / 200
Strata	150 / 200 / 250 / 300



Bora

A striking combination of dramatic grey and bronze tones contrasted with a rich ivory grain this is a truly impressive feature floor with a matt satin finish that looks wonderful against simple strong or neutral coloured furnishings.

Type	Width
Solid	105 / 150 / 200
Strata	150 / 200 / 250 / 300





Etesian

A pretty combination of champagne and natural clay tones with a slightly vintage feel and a matt finish. Right on trend, this floor also has a classic versatility that has made it a popular designer choice.

Type	Width
Solid	105 / 150 / 200
Strata	150 / 200 / 250 / 300



Diablo

Intense chestnut tones, with a subtle wash of gold and matt satin finish that not only adds an indulgent edge and picks out the fabulous grain but also makes the floor dance with life as it catches the light from different directions. Beautiful.

Type	Width
Solid	105 / 150 / 200
Strata	150 / 200 / 250 / 300



Maestro

A graceful blend of soft white and gentle cream shades with a subtle matt finish that enhances rather than masks the grain of the timber beneath, Maestro is most definitely a pale and interesting floor.

Type	Width
Solid	105 / 150 / 200
Strata	150 / 200 / 250 / 300





Etesian



Sirocco



Sirocco

With the enviable depth of texture and colour typically only found on years old air dried beams, these stunning Sirocco boards with their spectrum of earthy tones and subtle matt finish are generally thought to be original face reclaimed boards and most commonly used for restoration work or to add architectural interest to more modern interiors.

Type	Width
Solid	105 / 150 / 200
Strata	150 / 200 / 250 / 300



Solano

Defined by its intense graphite tones, Solano is a distinctive and dramatic floor that is nonetheless sophisticated and versatile. Its exciting texture is shown off by a matt satin finish that catches the light to ensure that it never has a 'dark' feel.

Type	Width
Solid	105 / 150 / 200
Strata	150 / 200 / 250 / 300



Shamal

A complex mix of strong smoky shades over a fabulously textured grain, highlighted with a soft clay tone and a matt satin finish, Shamal is a rustic yet refined floor. A perfect platform for naturally inspired interiors be they modern or classic in style.

Type	Width
Solid	105 / 150 / 200
Strata	150 / 200 / 250 / 300



Deep luxurious shades and smooth silky textures are the distinctive stamps of our Metro collection. Whether you are looking to create boutique hotel luxury, urban cool or a smart modern feel that stands out from the crowd, these floors are sure to make the grade.

All of the floors in our Metro collection are available as Solid and Strata engineered planks and most are also available in Essentials engineered parquet options. All are finished with hard wearing matt satin hardwax oil. See our 3 minute guide for details of the different board types and our Flooring Selector for installation options.

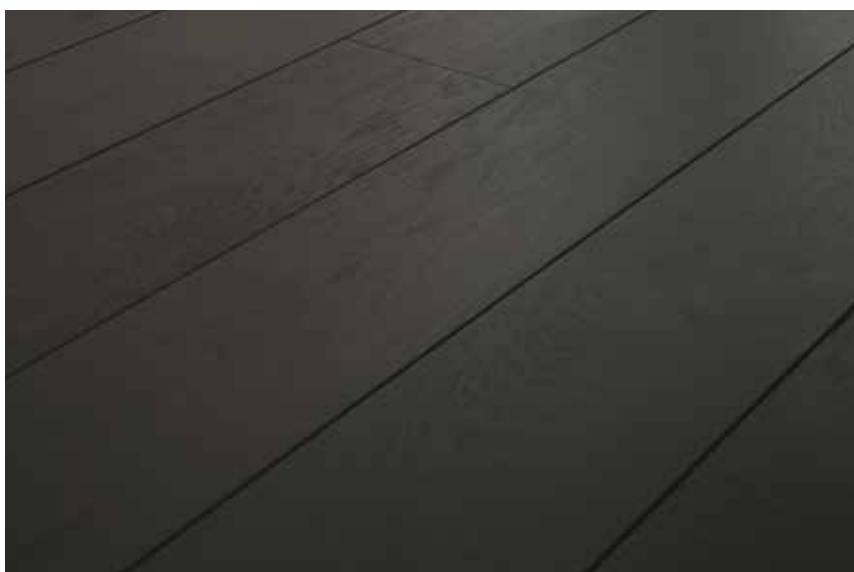
Metro



Porcelain Oak

The milky white tones of our Porcelain Oak with a lightly brushed surface and emphasised grain teams brilliantly with strong brights or other whites for a clean, contemporary feel. This floor is made on our Elegance Oak or Classic Extra Wide Oak as standard.

Type	Width
Solid	105 / 150 / 200
Strata	150 / 200 / 250 / 300
Essentials Block	95 x 600
Essentials Chevron	95 x 505



Midnight Oak

A distinctly black floor that retains a touch of transparency, Midnight Oak is a great way to bring a period interior right up to date as well as to add drama and sophistication to a contemporary space. It is made as standard on our Cottage or Classic Extra Wide Oak.

Type	Width
Solid	105 / 150 / 200
Strata	150 / 200 / 250 / 300
Essentials Block	95 x 600
Essentials Chevron	95 x 505



Iced Oak

An extreme white floor with just a hint of grey and a soft opacity that creates a distinct outline between each plank, Iced Oak has an almost painted look and is the ideal platform for an intense multi tonal white scheme. This floor is made on our Elegance Oak or Classic Extra Wide Oak as standard.

Type	Width
Solid	105 / 150 / 200
Strata	150 / 200 / 250 / 300
Essentials Block	95 x 600
Essentials Chevron	95 x 505





Raven Oak

A stunning multifaceted shade of black, our Raven Oak also benefits from a slight surface texture that picks out the grain of the timber beneath for additional depth and interest. It is made as standard on our Cottage or Classic Extra Wide Oak.

Type	Width
Solid	105 / 150 / 200
Strata	150 / 200 / 250 / 300
Essentials Block	95 x 600
Essentials Chevron	95 x 505



Sepia Fired

The subtle cinnamon tones of this floor, combined with a slight surface texture that picks out the grain as it catches the light, gives it a natural yet modern feel that is so inherent in Scandinavian style and beautifully adaptable. It is made on our Elegance or Classic Extra Wide Oak as standard.

Type	Width
Solid	105 / 150 / 200
Strata	150 / 200 / 250 / 300



Davenport Oak

With all of the depth and warmth of original Mahogany boards, our new Davenport Oak creates a richly toned, sophisticated floor that adds luxury and class to any room. The classic choice for an indulgent, gentleman's club style it is also the perfect way to add warmth and depth to sleek contemporary design. Made on Elegance or Classic Extra Wide Oak.

Type	Width
Solid	105 / 150 / 200
Strata	150 / 200 / 250 / 300
Essentials Block	95 x 600
Essentials Chevron	95 x 505





Raven Oak



Terra Fired



Grosvenor Oak

The smoky grey tones of our Grosvenor Oak create a floor with all of the elegance for which this part of London is known. Tasteful and timeless, with just a nod to the current trend, it can be used to stunning effect to add gravitas to a modern interior or to update a more traditional one. It is made on our Elegance or Classic Extra Wide Oak.

Type	Width
Solid	105 / 150 / 200
Strata	150 / 200 / 250 / 300
Essentials Block	95 x 600
Essentials Chevron	95 x 505



Terra Fired

Instantly evocative of boutique hotel chic, the rich brown tones of our Terra Fired Oak are the perfect platform for modern classic interior styling and create a floor that is luxurious and engaging. It is made on our Elegance or Classic Extra Wide Oak as standard.

Type	Width
Solid	105 / 150 / 200
Strata	150 / 200 / 250 / 300



Sienna Fired

A gentle spectrum of burnished shades from warm cream to nut brown, the pretty variation of our Sienna Fired Oak creates a warm, inviting floor that adds character without rusticity. It marries beautifully with most styles of modern décor and is made on our Elegance or Classic Extra Wide Oak as standard.

Type	Width
Solid	105 / 150 / 200
Strata	150 / 200 / 250 / 300



There is something instantly relaxing about our beautiful Coastal and Country collection. From the complex but subtle shades of Quayside to the simple but stunning Limed & Washed it is all about gentle rusticity, muted tones and soft textures combined to create calm, restful floors that will blend effortlessly into naturally inspired interiors and with other natural materials.

All of the floors in this collection are fully finished in Matt Satin unless otherwise stated and available on a choice of Solid and Strata engineered boards.

Coastal & Country



Seaside Grey

A delicate mix of pretty oyster and soft sandy shades with just a hint of white in the grain this floor couldn't really be called anything other than Seaside Grey. Made on our Cottage or Classic Extra Wide Oak as standard it has a gently rustic feel and a subtle matt finish.

Type	Width
Solid	105 / 150 / 200
Strata	150 / 200 / 250 / 300



Cloudy Grey

A quietly luxurious floor with just a hint of rusticity, Cloudy Grey is a mix of fudge and pewter shades enhanced by a gentle surface patina and a slightly paler, silvery grain. Perfect for more sophisticated country or coastal interiors it is made on Elegance or Classic Extra Wide Oak as standard with a pretty matt finish.

Type	Width
Solid	105 / 150 / 200
Strata	150 / 200 / 250 / 300



Weathered Grey

Our Weathered Grey floor combines warm honeyed tones with a slightly raised texture and soft grey grain to create a pretty, gently worn looking floor that is ideally suited to gently rustic coastal and country interiors of all styles. Made on our Cottage or Classic Extra Wide Oak as standard it has a gently rustic feel and a soft matt finish.

Type	Width
Solid	105 / 150 / 200
Strata	150 / 200 / 250 / 300





Washed Grey

The colour of old seaside decking, these pretty Washed Grey boards with a just hint of sea blue and a slight surface texture create a subtly rustic floor with a calm, relaxed mood. They are made on our Cottage or Classic Extra Wide Oak as standard and create a floor with a gently rustic feel.

Type	Width
Solid	105 / 150 / 200
Strata	150 / 200 / 250 / 300



Shingle Grey

Our new Shingle Grey is a fabulous medley of the wonderful mineral greys you find on the best pebble beaches. Gently rustic in style it is made on our Cottage or Classic Extra Wide Oak as standard it creates a pretty, versatile designer floor that would suit any naturally inspired interior.

Type	Width
Solid	105 / 150 / 200
Strata	150 / 200 / 250 / 300



Limed and Washed

A variation on the classic limed oak look, this more subtle interpretation has a soft wash of white across its surface to reduce the contrast with the limed grain and creates a less dramatic, more adaptable floor. It is made on Elegance or Classic Extra Wide Oak as standard.

Type	Width
Solid	105 / 150 / 200
Strata	150 / 200 / 250 / 300





Washed Grey



Breakwater

Rich in tone but light in feel, Breakwater combines subtle chestnut tones with a soft, creamy grain to create an inviting floor with a slightly aged feel and a natural, rustic elegance. It is made on our Cottage or Classic Extra Wide Oak as standard.

Type	Width
Solid	105 / 150 / 200
Strata	150 / 200 / 250 / 300



Quayside

Rustic yet sophisticated our Quayside Oak is a complex mix of natural shades, a rich texture and a soft creamy overtone that creates a stunning pale floor that still has plenty of character and depth. To suit its gently rustic style it is made on our Cottage or Classic Extra Wide Oak as standard and has a soft Matt finish.

Type	Width
Solid	105 / 150 / 200
Strata	150 / 200 / 250 / 300



Oyster Light

Like a handful of sand as you run it through your fingers, each board of our Oyster Light Oak contains a myriad of muted shades. Together they create a beautiful, multi tonal floor that is versatile, indulgent and a definite designer favourite. Oyster Light is made on our Cottage or Extra Wide Oak to give it a gently rustic style.

Type	Width
Solid	105 / 150 / 200
Strata	150 / 200 / 250 / 300



Broadleaf craftsmanship

The same knowledge, skill and care is given to every floor we produce be it big or small, standard or bespoke, giving you exceptional quality assurance whatever the size of your project. We work to the highest British standards of health and safety, applying rigorous controls, exacting standards and the pride of craftsmen at every stage of the production process.



Painted & Distressed

Inspired by the houses of New England's coast these beautiful floors are the perfect way to create a timeworn or reclaimed look that will last. Featuring classic Farrow & Ball shades, they are authentically distressed in a choice of styles and sealed with durable matt satin hardwax oil so that they will wear and can be refurbished just like our other wood floors.

Choose from solid or engineered planks and solid parquet, all made on our Cottage Oak, although little of its variation is visible in the finished floor. Other Farrow & Ball colours available on request.



Hampton

Made with Farrow & Ball's timeless New White, our Hampton parquet blocks feature authentically worn edges and a naturally distressed surface. They create a light and versatile floor with a classic shabby chic feel that is the perfect base for any a pretty country style interior.

Type	Width
Solid Blocks	70 x 280 / 90 x 600



Portland

Our Portland parquet blocks are made with Farrow & Ball's sultry Mole's Breath shade whose warm grey tone is right on trend. Combined with a distressed surface that naturally reveals the oak beneath and gently worn edges, this creates a relaxed, versatile floor that suits a wide range of interiors.

Type	Width
Solid Blocks	70 x 280 / 90 x 600



Littleton

Made with Farrow & Ball's fresh grey Worsted shade, Littleton Blocks are beautifully understated. The timber revealed beneath the paint provides a subtle yet attractive contrast which combined with their authentically worn edges and naturally distressed surface creates a pretty, elegant floor that looks as though it has been fitted for years.

Type	Width
Solid Blocks	70 x 280 / 90 x 600





Providence



Westford

Our Westford flooring combines Farrow & Ball New White with a clever distressing process which wears the edges and the surface of the boards to give them a naturally reclaimed feel. A beautiful floor in its own right, it can also be used to complement our Hampton Painted & Distressed Parquet.

Type	Width
Solid	105 / 150 / 200
Strata	150 / 200



Providence

Providence flooring is an exciting fusion of modern tones and vintage style. The worn edges and distressed surface of the boards blend naturally with the fresh grey and white tones of Farrow & Ball Plummet and All White to create a relaxed yet contemporary floor with a timeless feel.

Type	Width
Solid	105 / 150 / 200
Strata	150 / 200



Waterville

With their almost whitewashed look and tactile surface texture, Waterville planks are probably the most elegant of our Painted & Distressed collection. Natural partners for pretty country or coastal style interiors they would also be a great way to add depth to more modern minimalist modern schemes.

Type	Width
Solid	105 / 150 / 200
Strata	150 / 200 / 250 / 300





Amherst

With a gently timeworn feel based on the delicate cream tinged shade of Wevet by Farrow & ball, Amherst parquet blocks are simple, versatile and classic. Softly chipped edges define each block and reveal touches of the oak beneath to create a pretty, pale floor with a natural years old feel.

Type	Width
Solid Blocks	70 x 280 / 90 x 600



Montgomery

Montgomery parquet blocks are gently elegant, with just a hint of their warm red undercoat visible through the timeworn surface of Farrow & Ball Plummet grey and the natural oak beneath peaking through their softly chipped edges here and there. Create sumptuous modern style with grey walls in the same tone and rich velvet textiles!

Type	Width
Solid Blocks	70 x 280 / 90 x 600



Burlington

We love the way that the dramatic tone of Farrow & Ball's Charlotte's Locks sneaks through the gently distressed, more moody Stiffkey Blue on the surface of our Burlington Parquet blocks. Softly chipped edges add a natural, authentic feel and we can just imagine this floor in Scandi style rooms paired with warm wood, white walls and natural fabrics.

Type	Width
Solid Blocks	70 x 280 / 90 x 600





Amherst

Traditional Parquet

Smooth, sleek and effortlessly glamorous it is not surprising that most of us secretly covet a traditional parquet floor. Maybe it's the sense of luxury, maybe it's the way they catch the light, but we think it is probably the way they show off the sheer beauty of the timber.

Our Traditional Parquet is available in a choice of blocks or chevrons, beautifully machined and perfectly proportioned. They are unfinished and will need to be filled where necessary, sanded and sealed after fitting. Please note chevrons have a micro-bevelled edge and blocks have a square edge.



Cottage Oak

Ideal for creating a more rustic style parquet floor, our Cottage Oak Parquet features a spectrum of warm, natural colour variation from cream to caramel as well as smaller knots. If finishing in situ, try our Aged Hardwax Oil for a slightly lived in look from day one.

Type	Dimensions
Solid Blocks	70 x 280 / 90 x 600
Solid Chevron	90 x 510



Elegance Oak

The perfect choice for a sophisticated yet informal parquet floor, our Elegance Oak Parquet features golden oak tones and a peppering of small knots that create a natural, relaxed feel.

Type	Dimensions
Solid Blocks	70 x 280 / 90 x 600
Solid Chevron	90 x 510



Gallery Oak

With only the occasional pin knot and little colour variation our Gallery Oak Parquet creates a floor which is formal in style, luxurious in feel and utterly timeless. Add borders or tramline for a more period look.

Type	Dimensions
Solid Blocks	70 x 280 / 90 x 600
Solid Chevron	90 x 510



Original Vintage Parquet

Our Original Vintage blocks have long been one of our best selling floors. Loved for their informal elegance and subtle authenticity they feature softly worn edges and a gently distressed patina, and are available in a chevron option as well as a classic block in all of the oak choices.

Original Vintage Parquet is supplied semi-finished as standard to be top-coated after fitting with 2 coats of the appropriate Broadleaf Hardwax Oil (*see product information for details*). Alternatively, if they are to be fitted with no border, they can be ordered fully finished for a small supplement.



Silvered Oak

The pretty pale grey tones of our Silvered Vintage Parquet, with just a hint of natural oak beneath, give it a light, modern feel that is adaptable and timeless. Made as standard on our Elegance Oak Parquet it should be top-coated with Light Broadleaf Hardwax Oil unless ordered fully finished.

Type	Width
Solid Blocks	70 x 280 / 90 x 600
Solid Chevron	90 x 510

U S F



Nude Oak

A wash of our unique Nude Hardwax Oil gives this floor the widely coveted look of bare timber and adds a contemporary edge to its classic vintage style. Nude Vintage Parquet is made on our Cottage Oak Parquet as standard for a gently rustic look and should be topcoated with Broadleaf Nude Hardwax Oil unless ordered fully finished.

Type	Width
Solid Blocks	70 x 280 / 90 x 600
Solid Chevron	90 x 510

U S F



Smoked Oak

Intrinsically elegant and wonderfully versatile Smoked Oak Vintage Parquet contains a spectrum of burnished tones evocative of mixed spices that adapts to most styles of interior. This floor is made on our Elegance Oak Parquet and should be top-coated with Classic Broadleaf Hardwax Oil unless ordered fully finished.

Type	Width
Solid Blocks	70 x 280 / 90 x 600
Solid Chevron	90 x 510

U S F



Rich Oak

With its soft texture and warm, luxurious tones Rich Vintage Oak Parquet is the perfect way to create an inviting space whatever the size or style of your room. This floor is made on our Cottage Oak Parquet for a gently rustic look and should be top-coated with Classic Broadleaf Hardwax Oil unless ordered fully finished.

Type	Width
Solid Blocks	70 x 280 / 90 x 600
Solid Chevron	90 x 510



Aged Oak

With a wash of our exclusive Ageing Oil to bring out its grain, Aged Oak Vintage Parquet brings an immediate sense of character to even the newest interior and fits effortlessly into any period room. This floor is made on our Cottage Oak Parquet for a gently rustic look and should be top-coated with Classic Broadleaf Hardwax Oil unless ordered fully finished.

Type	Width
Solid Blocks	70 x 280 / 90 x 600
Solid Chevron	90 x 510



Worn Oak

Elegant and luxurious, the deep grey tones of our Worn Vintage Oak Parquet with just a hint of the golden oak tones beneath create a sophisticated floor that is inherently vintage in style, modern in feel and brilliantly versatile. This floor is made on our Cottage Oak Parquet for a gently rustic look and should be top-coated with Classic Broadleaf Hardwax Oil unless ordered fully finished.

Type	Width
Solid Blocks	70 x 280 / 90 x 600
Solid Chevron	90 x 510





Worn Oak



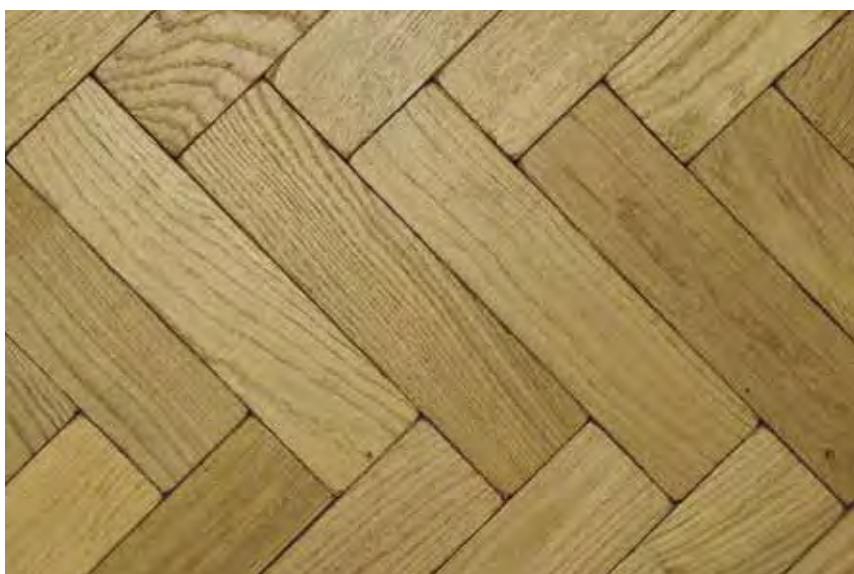
Classic Oak



Dark Oak

Dark in tone but light and sophisticated in feel, Dark Oak Vintage Parquet is a stunning backdrop for traditional and modern interiors alike. This floor is made on our Cottage Oak Parquet for a gently rustic look and should be top-coated with Classic Broadleaf Hardwax Oil unless ordered fully finished.

Type	Width
Solid Blocks	70 x 280 / 90 x 600
Solid Chevron	90 x 510



Classic Oak

A perennial favourite, truly reminiscent of famous old floors across the globe and at home almost anywhere the natural oak tones of our Classic Vintage Parquet are supremely adaptable and ultimately authentic. This floor is made on our Cottage Oak Parquet for a gently rustic look and should be top-coated with Classic Broadleaf Hardwax Oil unless ordered fully finished.

Type	Width
Solid Blocks	70 x 280 / 90 x 600
Solid Chevron	90 x 510



Merbau

Rich and inviting, the deep auburn tones of our Merbau Vintage Parquet are sophisticated yet informal and create a floor with a classic modern style that marries beautifully with 1930's and 1950's architecture as well as contemporary design. They should be finished with Broadleaf Classic Hardwax Oil unless ordered fully finished.

Type	Width
Solid Blocks	70 x 230

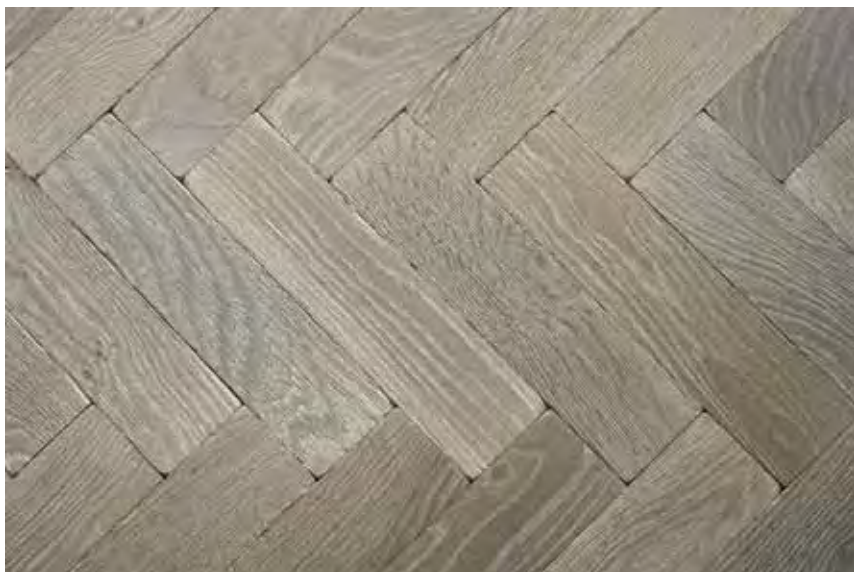


Pullman Vintage Parquet

Our Pullman Vintage Parquet collection began with a bespoke designer floor created for the stunning Pullman Hotel in St Pancras.

An evolution of our Original Vintage Parquet these designer floors feature softly worn edges and a slightly textured surface enhanced by gorgeous multi tonal shades.

Pullman Vintage Parquet is made on our Cottage grade parquet and is available in both block and chevron options. It is supplied semi-finished as standard to be top-coated in situ with our Light Oak Hardwax Oil. Alternatively, if it is to be fitted with no border it can be ordered fully finished for a small supplement.



Santa Lucia

Pale and interesting is the perfect description of this pretty silver grey floor, whose white highlights create a modern vintage look with a classic feel that adapts easily to a wide range of interiors.

Type	Width
Solid Blocks	70 x 280 / 90 x 600
Solid Chevron	90 x 510

U S F



Connolly

Pretty and subtle with a delicate, slightly aged feel that is instantly familiar, this is probably the most versatile floor in our Pullman collection and would be at home in almost any room. Ideal for classic period or country style.

Type	Width
Solid Blocks	70 x 280 / 90 x 600
Solid Chevron	90 x 510

U S F



Gare Du Nord

In the Beaux Arts tradition of its namesake, the deep tones and dramatic feel of this floor are unashamedly grand in aspiration and very much designed to live up to the most elegant architectural style.

Type	Width
Solid Blocks	70 x 280 / 90 x 600
Solid Chevron	90 x 510

U S F



St Pancras

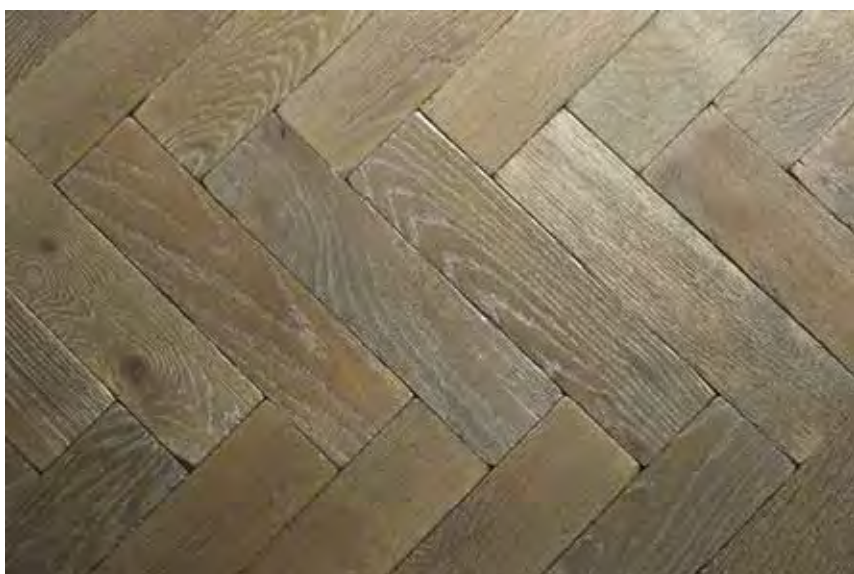


St Pancras

The original Pullman's, St Pancras combines polished nut brown background tones with subtle cream to create an inherently luxurious and inviting floor which blends seamlessly with period architecture and classic contemporary styling.

Type	Width
Solid Blocks	70 x 280 / 90 x 600
Solid Chevron	90 x 510

U S F



Chamartin

We think that there is something almost flirtatious about this fabulous finish with its glamorous mix of champagne, silver and just a little bit of glitz when it catches the light. Put them anywhere – who needs an excuse!

Type	Width
Solid Blocks	70 x 280 / 90 x 600
Solid Chevron	90 x 510

U S F



Waverley

When we imagined a floor in the tones of naturally weathered oak, this is what we saw – a multi dimensional spectrum of soft grey tones that still retain just a touch of their original golden hue. Modern ? Vintage ? We're not sure but we love it.

Type	Width
Solid Blocks	70 x 280 / 90 x 600
Solid Chevron	90 x 510

U S F



Lichtenberg

Sultry and opulent, the intense tones of our Lichtenberg parquet create a certain gravitas that marries beautifully with period architecture but can also be used to excellent effect in modern spaces as an architectural feature in its own right.

Type	Width
Solid Blocks	70 x 280 / 90 x 600
Solid Chevron	90 x 510

U S F



Montparnasse

The rich butterscotch tones of our Montparnasse parquet have a definite touch of sunshine about them, sure to raise a smile on even the most dreary day. A great floor to add warmth to north facing rooms or those a bit short of natural light.

Type	Width
Solid Blocks	70 x 280 / 90 x 600
Solid Chevron	90 x 510

U S F

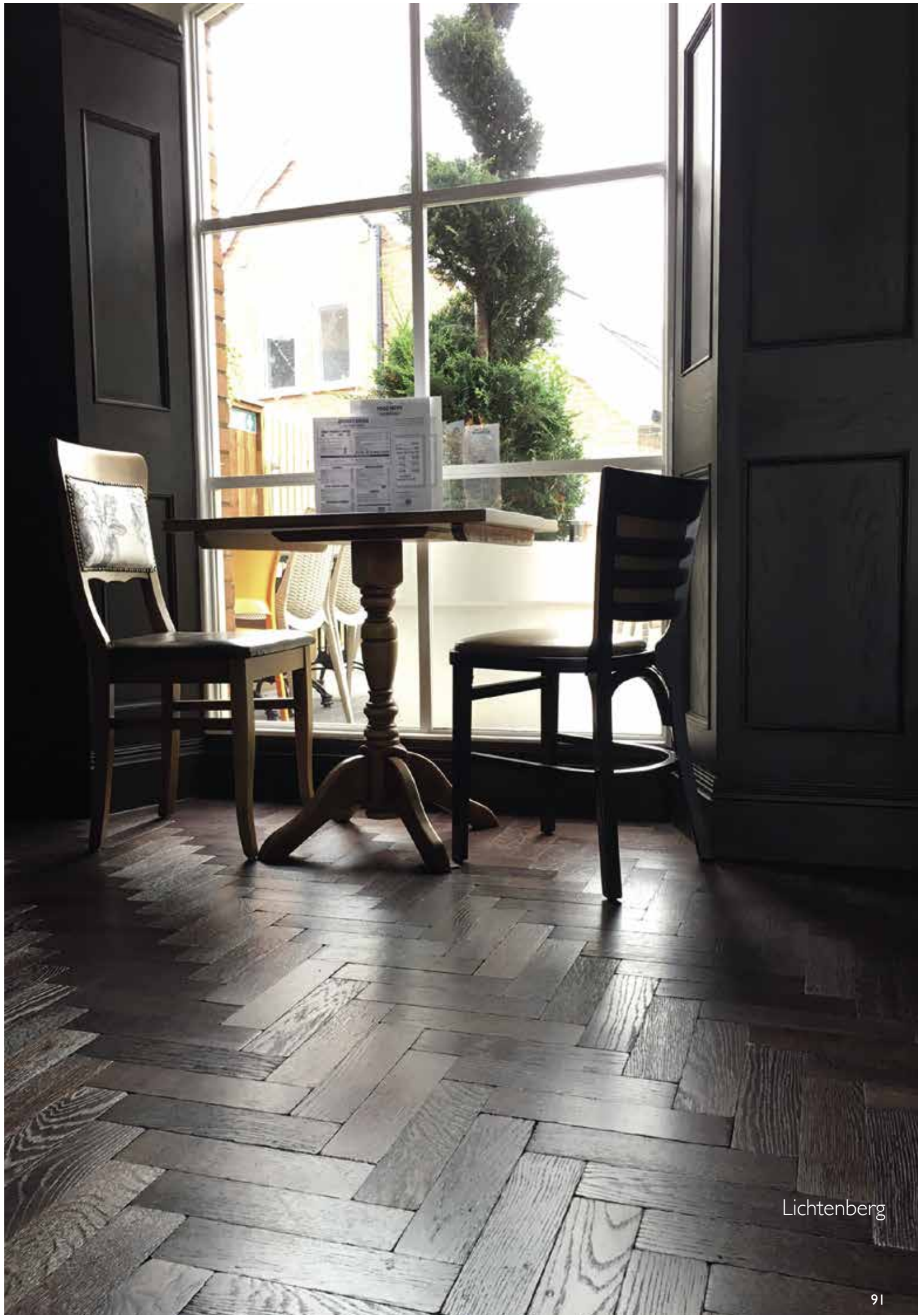


Bergen

A myriad of soft earthy tones evocative of old oak weathered by the elements over time, this pretty parquet floor has a rustic contemporary look that teams beautifully with most styles but particularly with industrial, natural or other slightly rustic schemes.

Type	Width
Solid Blocks	70 x 280 / 90 x 600
Solid Chevron	90 x 510

U S F



Lichtenberg

Nordic Parquet

Nordic interior design is characterised by functionality, simplicity and beauty. Key to this now classic style are natural elements and textures, of which wood flooring is the staple.

Our brand new Nordic Parquet Collection is inspired by the neutral colour palettes and clean lines of the Scandinavian tradition. Simple in design and pale in tone they are all about understated elegance and warm functionality and create a modern yet homely feel in any space. All are made on our Elegance Oak and finished with durable, hardwax oil for a natural look that just catches the light.



Gylden

The soft pale oak tones of Gylden Parquet, combined with a gentle texture and warm white grain make it a pretty, elegant and natural looking floor that adds crucial warmth to white or neutral interiors whilst remaining light and modern in feel.

Type	Width
Essentials Block	95 x 600
Essentials Chevron	95 x 505



Mysa

Somewhere between caramel and butterscotch, the beautiful tones of our Mysa parquet are instantly inviting. With a subtle cream grain to add light and texture, this floor is perfect for North facing rooms with lower light levels in winter and creates a cosy but stylish feel in any room.

Type	Width
Essentials Block	95 x 600
Essentials Chevron	95 x 505



Kyrr

The delicate grey tone of our Kyrr Parquet is serene and calming, perfect as a platform for multi-tonal schemes from white to black. A hint of the Elegance Oak beneath provides natural warmth and its pretty matt satin finish enhances the sense of light and space.

Type	Width
Essentials Block	95 x 600
Essentials Chevron	95 x 505





Skon



Sten

With its spectrum of blue grey and warm bronze tones, our Sten Parquet has an inherently natural feel. A slight texture and a lighter, clay tone pick out the grain of the timber to add depth and sophistication, making this a beautiful floor to balance light airy rooms, and paler minimal styling.

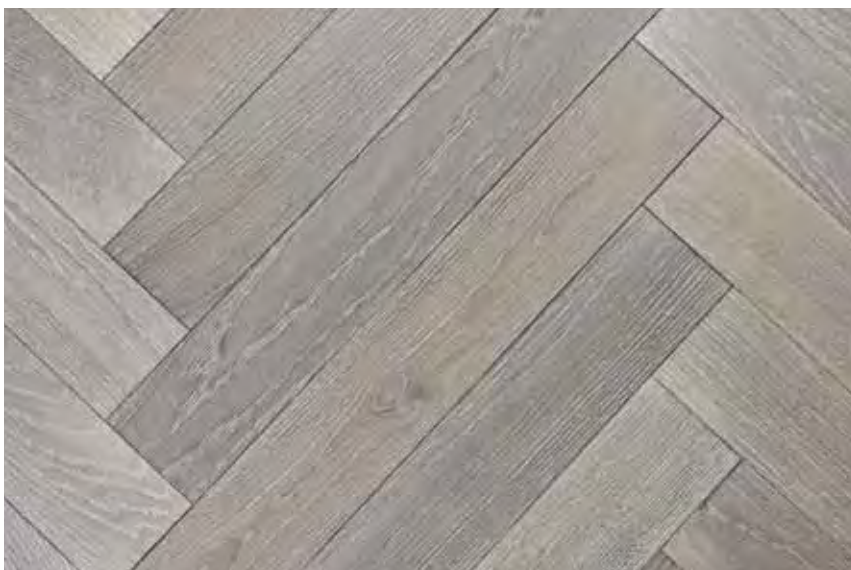
Type	Width
Essentials Block	95 x 600
Essentials Chevron	95 x 505



Skon

Like a good cognac, our Skon Parquet is at the same time comforting and refined. Warm in tone and light in feel, with a subtle texture that feels fabulous underfoot this floor is the embodiment of the Nordic tradition – simple, elegant and beautiful – and there are few rooms we can't imagine it in.

Type	Width
Essentials Block	95 x 600
Essentials Chevron	95 x 505



Kyst

A pretty mix of gentle silver greys and a soft white grain, our Kyst Parquet creates a floor with a light, contemporary look and an easy, organic style that is enhanced by its subtle, matt finish. With a slightly coastal feel, it is a natural partner for any white or grey based interior.

Type	Width
Essentials Block	95 x 600
Essentials Chevron	95 x 505



Doors

Doors are one of the most important architectural features of any building. They define its personality and are one of the easiest and most overlooked ways to transform the whole look and feel of a house. Beautiful doors exude taste and quality, adding a subtle sense of style to any room or façade and our exclusive collection has all you need to really make an entrance.

Broadleaf External Doors are individually hand built to meet your needs and suit your home in seasoned French Oak or ready to be painted. For interiors, choose from our traditional plank doors to add character or our beautifully proportioned panelled doors for period elegance or classic modern style.





Internal Plank Doors

There are few better ways to add a touch of rustic style to a room than with our traditionally crafted Oak Plank Doors. Made to measure in a choice of grades and with ironmongery to suit in a range of finishes, they can be traditional or contemporary as you prefer.



Typically built from 4-6 beautiful solid planks, our Oak Plank Doors have 3 ledges on the reverse and are finished as standard with traditional rosehead nails. If you prefer a less rustic look you can order them without the nails as these are only decorative.

Plank Doors are available in two grades of Oak – more rustic Cottage and more classic Elegance. Details of these grades can be found in the Information Section on PI37.

As each door is made to measure, non standard sizes or slanted openings are not a problem. We can also make cupboard doors or fire doors with a 30 minute rating, and supply solid oak architrave and door liners to create internal frames.

Oak Plank Doors are supplied sanded ready to finish as standard, but if you would prefer a fully finished solution you can add one of our beautiful signature finishes detailed on PI02.



Plank door in Elegance Oak

Front



Back

Internal Panelled Doors

Beautifully designed and perfectly proportioned, our Panelled Oak Doors are the perfect way to add timeless elegance to classic and modern interiors. With the look and feel of a traditionally hand built door they are in a class apart from mass produced options.





4 panel



6 panel

Successfully combining solid oak, meticulous veneers and stable softwood our beautifully engineered oak panelled doors are an extremely affordable luxury. At a generous 40mm thick, they have the look, feel and weight of a traditional solid oak construction, as well as excellent sound resistance.

Choose from 5 classic designs in standard and bespoke sizes and add stylish solid oak architrave and door liners to create matching internal frames. Fire doors with a 30 minute rating are also available in both 4 and 6 panel designs along with fire door liners.

Glazed designs feature 6mm safety glass with a sophisticated bevelled detail that catches the light and creates just a hint of distortion as you look through it.

Whatever design or size you choose, you can add one of our workshop finishes on P102 or have your door left ready to seal in situ with the finish or your choice.



Half glazed



10 pane



15 pane



Glazing is bevelled on one side

Door Finishes

Choose one of our signature shades and have your doors hand finished in our workshops to make installation even easier. Satin matt and semi opaque these beautiful hardwax oil colours are natural looking, hard wearing and practical. Alternatively, our hardwax oils can be purchased separately in 1L and 2.5L options to be applied in situ.

Nude

An almost invisible finish that barely changes the tone of the oak.



Classic

A natural finish that brings out oak's warm golden tones.



Aged

A finish that highlights the grain and adds a caramel tone for a lived in look.



Worn

A soft deep bronze grey, classic yet modern.



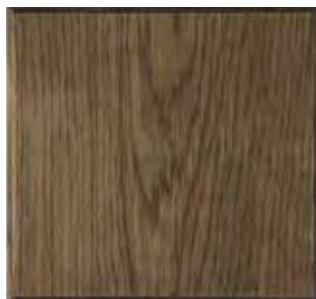
Warm

A mellow honeyed tone, tinged with russet.



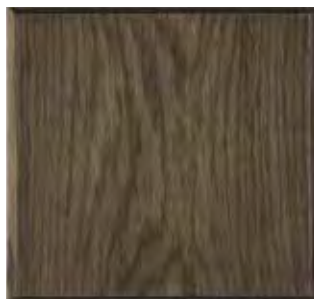
Rich

A luxuriant polished oak tone.



Dark

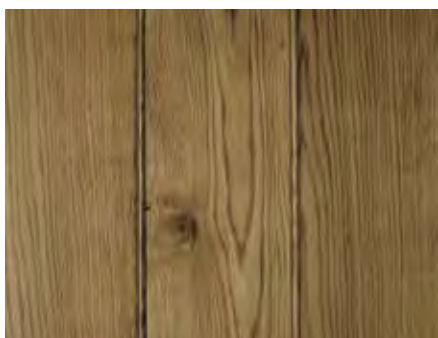
An inky Jacobean tone.



For an authentic aged or reclaimed look and feel, plank doors can be Brushed & Burned to add natural colour that graduates from edge to centre and a rich, tactile patina. Brushed & Burned Doors will need to be sealed with a hardwax oil finish, either in our workshops or in situ.

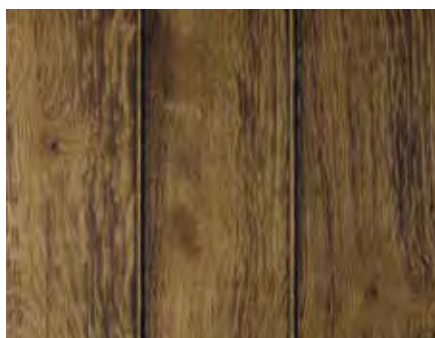
Light

From burning at the edges only to traces of burning towards the centre of the board.



Medium

From traces of burning towards the centre to burning across most of the face.



Dark

A substantial degree of burning across most or all of their face.





External Doors



Impressive and inviting, our beautiful external doors are traditionally craftsman built by hand to last a lifetime. Every one is unique, made to measure in our workshops from carefully selected timber to your specifications and its own individual design drawing. Our classically inspired designs include options for properties of all styles and openings of all sizes or we can create entirely bespoke doors to meet your particular needs. Most designs are available in both an Oak and a paintable option – see PI38 for details.

Fermette



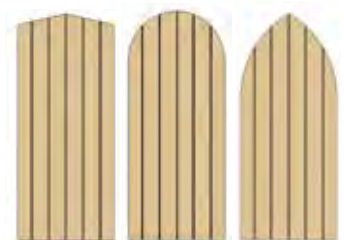
A traditional framed, ledged & braced plank door; slightly rustic in style. Available with vision panel or glazed and can be made as a stable door.

Chateau



This is a beautiful and truly impressive period design, reeded on the front face, framed and ledged on the rear and featuring an authentic and elegant Tudor arch.

Manoir



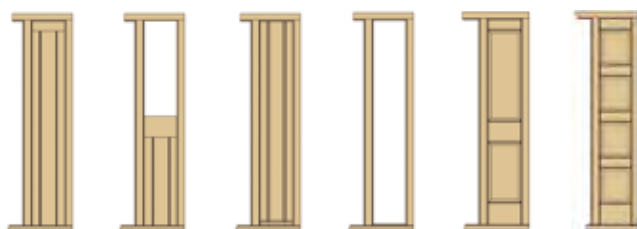
This simple but majestic door is internally ledged leaving the planks uninterrupted on both sides. Available with a choice of elegant arched heads and with a choice of arched or square headed frames.

Bespoke



If you need to match existing doors, have a particular style in mind or just want something different, talk to our design team about an entirely bespoke door. Often no more expensive than our classic designs this option enables you to create something truly unique.

Side Panels



If you have the luxury of a larger entrance, side panels can be added to any of our external doors to stunning effect. Choose from glazed and solid options in a range of complementary styles.

All of our designs are available in Oak to be finished as you choose and most can also be made from sustainable hardwood, which is primed by us ready for you to paint in the colour of your choice.

Deco



Simple and stylish, this elegant 2 panel door is typical of its period with two raised panels surrounded by classic Ovolo mouldings.

Edwardian



The classic 4 panel door; a period inspired feature equally suited to a modern property. With handcrafted panels, it is equally stunning in oak or primed for painting.

Georgian



A timeless 6 panel door; perfectly suited to a tall aperture to create the look and feel of a 'grand' entrance. Illuminate darker hallways with glazed toplights.

Bank



Bank is the ultimate 'porte de resistance', an imposing 8 panel door fit to grace the most splendid entrance either alone, or with its matching side panels.

Classic French Doors



Our beautiful French doors look stunning in any style of property, introducing light and a sense of space. Choose from fully or part glazed designs, which can be combined with fixed side panels if required. All are supplied double glazed and with frames to be hung in situ.



Extras and Accessories

Our Extras & Accessories are all about beautiful details. Some, such as our elegant range of trims or beautiful selection of ironmongery will provide a final flourish and professional finish for our floors and doors. Others, like our stair cladding, create stunning features in their own right. All can be relied upon to add a subtle but undeniable sense of luxury.

For advice on how to take best advantage of any of these products, give us a call or pop into one of our showrooms.





Stair Cladding and Components



Dark Oak Vintage Parquet & Stair Components.

Create a stunning oak staircase with our beautiful solid French oak stair components. Designed to clad existing timber or concrete steps they include made to measure treads and risers as well as everything you need to create elegant and tactile balustrade. Finish them in situ or order them finished in our workshops to tone with our floors.

Treads

250mm x 1000mm x 23mm with bull nosed or chamfered profile. Bespoke sizes and treads without tongue and groove also available.



Risers

200mm x 1000mm x 16mm. Bespoke sizes and risers without tongue and groove also available.



Handrail

Our classic handrails can be supplied to fit spindles to create balustrade or to be wall mounted in any length up to 4.2m. Simply let us know which you need when you order.



Round



Mushroom



Ogee

Spindles

Classic straight spindles in 20mm/24mm/30mm. Turned spindles are made to order. All are supplied in 900mm lengths to be cut in situ.



Carriage

Available for stairs or landings to fit any of our spindles in lengths to 4.2m. Spacers should be ordered separately.



Newels

90mm square, made to length to 4m.



Newels Caps

Finish newels neatly with classic ballcaps or chamfered newel caps.



Bullnose

Designed to fit neatly under our landing carriage.
80mm x 20mm up to 4.2m



Stair Finishes

For a true designer look, take advantage of our finishing service to have your oak stair cladding or components finished to tone with your floor.

For maximum impact have the treads, risers and handrails treated in this way and paint structural elements such as the spindles and carriage in a shade to complement other woodwork.



Ironmongery



Carefully sourced and beautifully crafted our stylish ironmongery collection offers all you need for perfect finishing touches to your beautiful real wood throughout. Our favourite pieces are showcased here with a more extensive selection available on our website. Please bear in mind that as most are handmade slight differences between individual pieces are a feature.

T hinges

The classic style of hinge for traditional plank doors. Available in a choice of designs, finishes and sizes and supplied in pairs.



Pull Handles

Perfect for cupboards, drawers or doors, these traditional style pull handles are available in classic Penny or Gothic designs to match the traditional T hinges and Suffolk latches in a choice of sizes and finishes.



Privacy Latches

Easy to open, even for the smallest fingers, this rustic style latch is designed to be opened from one side only and can be used on cupboards or as a simple alternative to a shoot bolt. Choose from traditional Beeswax or more contemporary Pewter finishes.



Suffolk Latches

The archetypal plank door latch available in classic Penny or Gothic designs in a choice of finishes. Locking staples are also available to match should you prefer these to an independent bolt.



Thumb Latches

A classic thumb latch designed to be opened from one side only, ideal for coat or other storage cupboards to complement traditional Suffolk Latches and T Hinges. Choose from traditional Beeswax or more contemporary Pewter finishes.



Shoot Bolts

These simple, rustic shoot bolts are available in a choice of sizes and finishes in both straight options designed for doors that open towards you and cranked versions for doors that open away.



Coat Hooks

A selection of both simple coat hooks and larger coat & hat hooks in a choice of finishes. Should you wish we can also supply oak backboards for these so that you can create your perfect coat rack.



Smaller Hooks

Pretty hooks in a choice of traditional Fleur de Lys and Gothic designs in a choice of finishes, perfect for dressing gowns, teatowels, dog leads, keys, in fact just about anything!



Interior Door Knobs

A beautiful selection of classic door knobs for interior use, in a range of designs and finishes. Choose from brass, wood, nickel, pewter and more. Sold in pairs they are designed to be fitted to a sprung mortice latch.



Exterior Door Knobs

Classically designed centre door knobs handcrafted and carefully shaped to suit the range of front door and property styles. Sold individually to fit to the exterior face of the door with the provided bolt and help draw it closed.



Lever Handles

A beautifully crafted selection of lever handles designed with both traditional and contemporary settings in mind. Available in a range of finishes, most of which can be used both inside and out, they are all supplied in pairs to be fitted to a sprung mortice latch / lock.



Sprung Lever Handles

A classic range of sprung lever handles designed to be used with a simple mortice latch. Available in a choice of finishes, most of which can be used both inside and out, they are all supplied in pairs to be fitted to a mortice latch / lock.



Letter Plates

An elegant selection of hand-made letter plates, sprung loaded and made from either high quality steel with a choice of finishes or classic solid brass. Knobs and knockers are available to complete the look in each case.



Door Knockers

The ultimate finishing touch for an impressive front door, these hand crafted door knockers are weighty and tactile. Available in a range of finishes (please note that Beeswax should not be exposed to the elements) they come complete with strikers and fixing screws.



Window Latches

There is something to suit all property styles in our carefully crafted range of window fasteners, as well as locking, non locking and night venting options. Sold individually they are available in left and right hand options in a choice of finishes.



Window Stays

Our window stays come in choice of attractive styles and finishes to match our range of window latches and suit the spectrum of properties. All designs are available in a choice of classic sizes - 8", 10" and 12".



Espagnolettes

Espagnolette handles are an elegant closing solution for all kinds of locking windows be they wood, upvc, aluminium or engineered timber. Available in a choice of styles and finishes they come complete with allen key and matching fixing bolts.



Escutcheons

Our pretty escutcheons offer a wide choice of finishes and shapes, both open and covered, to match our handles and knobs should you wish to combine them with a separate lock.



Curtain Furniture

Complete your room in classic style with our beautiful curtain poles in either pewter or beeswax finishes with a choice of elegant finial designs, matching brackets and simple curtain rings. Brackets and finials are sold in pairs.



Cupboard Knobs

Whether you are refreshing your existing kitchen, finishing off a new one or just looking to perk up an old piece of furniture, our extensive range of cupboard knobs will let you do it in style. Choose from a fabulous selection of designs and finishes in a choice of sizes.



Drawers Pulls

Carefully crafted you can instantly feel the quality of our traditionally styled drawer pulls. Available in pewter, black and beeswax finishes in a choice of classic designs they are sold individually and come complete with fixing screws.



Letters & Numbers

Dress your doors in style with these fabulous weighty numbers and letters in a choice of finishes that will suit traditional and modern properties alike. Fix them to a backboard to create your own stunning house name sign.



Skirtings and Trims

Carefully selected and beautifully machined, our choice of hardwood trims ensure a high quality, professional looking finish. Finish skirting and architrave with our natural hardwax oils after fitting. (Beading, thresholds and sills can be finished in our workshops to tone with our floors).

Oak Skirting



125mm Chamfer



125mm Ogee



170mm Chamfer



170mm Ogee

Our French Oak skirting is available in 2 classic profiles – Ogee & Chamfer. It features some knots which are occasionally open and will need to be filled and sanded after fixing and prior to finishing. We recommend that it is screwed and plugged, not glued.

Beading

Beading is a discreet way to cover the expansion gap where skirting is not to be replaced. Supplied in lengths from 2 - 3m depending on product and can be finished to tone with our floors.



Flat



Scotia



Quadrant

Thresholds

Thresholds create a neat transition between floor coverings at doorways and accommodate any height differences. As well as the standard profiles shown below we also offer bespoke options. All can be finished to tone with our floors and supplied for single or double doorways.

Curved
ThresholdHalf-Curved
Threshold

T Bar

Oak Window Sills

Our Oak window sills can be made in any size to 850mm wide by 3.5m long in Cottage or Elegance grade and either prefinished or left sanded for the finish of your choice. They are made from solid oak, jointed for stability.



Oak Architrave

Surround internal doors with beautiful Oak architrave in Ogee or Chamfer profile for maximum impact. Combine with Oak Door Liners to create an internal oak door frame.



Finishes, Fitting Products & Aftercare

For a professional installation and high quality finish, take advantage of our experience and use our recommended fitting and finishing products. Refer to the flooring selector and installation guide for further guidance on suitable applications, or ask our staff. Use our recommended aftercare products to keep your floor looking showroom beautiful.

Finishes	Finish	Description	Size	Coverage	Time to recoat
Classic Broadleaf Hardwax Oil	Matt Satin	A clear, natural hardwax oil that protects and enhances floors, doors and other internal joinery	1L/2.5L	24m ² /L	4-6 hours
Coloured Broadleaf Hardwax Oil	Matt Satin	Natural looking hardwax oil shades designed for internal use. Use alone or topcoat with Classic Hardwax Oil for a more subtle shade.	1L/2.5L	24m ² /L	4-6 hours
Nude Broadleaf Hardwax Oil	Matt Satin	A unique hardwax oil designed to create a bare wood look on internal timber.	1L/5L	15m ² /L	1-2 hours
Osmo Polyx Oil	Matt Satin	A clear hardwax oil blend for floors, doors and other internal joinery.	0.75L/2.5L	24m ² /L	8-10 hours
Osmo UV Protection Oil 420	Matt Satin	A high quality oil based finish for exterior joinery that helps maintain colour.	0.75L	17m ² /L	12 hours
Osmo Natural Oil Woodstain	Matt Satin	A range of protective oil based colours for exterior joinery.	0.75L	25m ² /L	4-6 hours
Fiddes Wood Dye	N/A	A range of solvent based professional stains in traditional tones.	1L	36m ² /L	6-8 hours

Adhesives	Description	Size	Coverage	Curing Time
Broadleaf Ultra	A premium quality MS polymer adhesive specifically designed to plank & parquet floors with no VOCs.	10kg/15kg	0.8kg/m ²	12-18 hrs
Broadleaf Ultra Dry	A solvent free, water based epoxy primer & moisture barrier for use with Broadleaf Ultra adhesive.	6kg	0.2kg/m ²	25-48 hours
Lecol PVAC	A water based adhesive for use when floating our Strata & Essentials boards.	1L	50m ² /L	n/a
Portanails	Professional barbed flooring nails for secret nail fitting with a Portanailer Hammer.	1000/pack	Av 40m ²	n/a

Aftercare	Description	Size
Broadleaf Wood Floor Cleaner	Specially formulated to clean waxed, oiled and lacquered wood floors without damaging their finish.	1L
Broadleaf Wood Floor Wax	Simple, no fuss maintenance wax specifically designed to care for oiled and wax floors.	1L

Nothing captures the warmth and wonder of nature like wood, and nothing defines the spirit of your home like a unique piece of handcrafted joinery. Be it a bold focal point or more subtle architectural feature, rustic or refined, its timeless organic beauty will enchant and impress.

Broadleaf Design is an entirely bespoke service which combines our passion for design and traditional craftsmanship, and offers you the chance to create beautiful timber features for your home as individual as the trees from which they originate.

Traditional or modern in style, humble or majestic in scale, we are always excited by a new project and look forward to hearing about yours.

design@broadleaftimber.com

Design





Design and Planning

The first stage of any design project is customer consultation. We discuss your project, listen to your ideas and look at any plans or visuals, then offer some initial design ideas and ballpark costs. This consultation is free of charge unless we attend site.

For more simple projects it is usually sufficient for us to produce a preliminary quote and drawings. On approval of these we can then take final details, confirm our quote and plan production.

For more complex projects further discussions and a site visit are usually needed to evolve the design before producing detailed drawings. Structural calculations can also be necessary. A project of this kind is charged on a consultancy basis; the designs produced belong to the client with no obligation to use Broadleaf Design for the implementation stage.

Building your timber feature

Timber for each project is carefully selected for its specific purpose. It is usually oak, although we do introduce other timbers where appropriate.

Whatever timber we use is sourced from trusted suppliers and sustainable forests. Where designs include other natural materials such as glass, zinc or iron, we can also source these from other craftsmen with whom we work.

According to your needs we can either supply, or supply and fit your project. Our skilled team includes joiners, glaziers, carpenters, oakwrights and cabinet makers who are managed by Broadleaf Design to ensure smooth project running and the highest quality of workmanship.

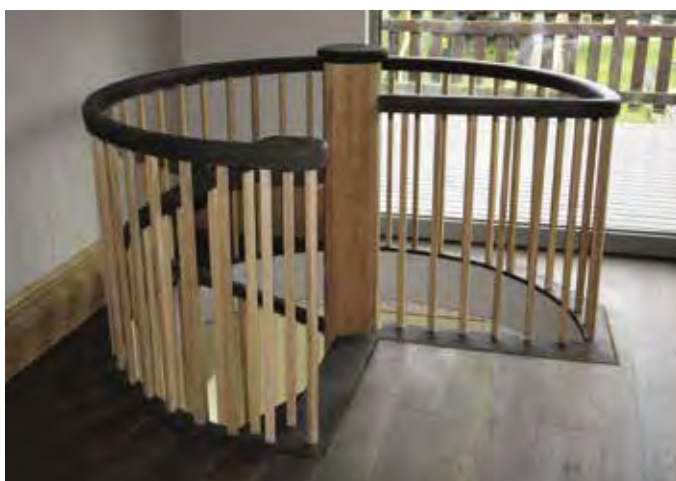






Next Steps

These images offer a taste of the Broadleaf Design portfolio. If you would like to see more examples, browse www.broadleaftimber.com/design. If you would like to discuss a project with Broadleaf Design, contact us through your nearest Broadleaf showroom, or directly at design@broadleaftimber.com



Broadleaf Information

Floors

Essential Information	126
Installation Guide	128
Flooring Selector	134

Doors

Internal Doors	
Essential Information	137
External Doors	
Essential Information	138

Customer Services	140
-----------------------------------	-----

[Samples](#)

[Delivery](#)

[Equipment Loan](#)

[Advisory Service](#)

Additional Information	140
--	-----

[How to Order](#)

[Recommended Fitters](#)

[Sustainability](#)

Floors

Essential Information

Can I fit a wooden floor anywhere?

Most of our floors can be used in any room as long as it is free of damp and all plaster and concrete are fully dry (see below for further details). The exceptions are bathrooms and other areas of high humidity where we don't recommend using solid boards over 150mm wide.

Can I fit Broadleaf wood floors over underfloor heating?

Broadleaf have been successfully supplying wood floors for use over underfloor heating for over 15 years. All of our floors have options that can be successfully installed over underfloor heating in line with the advice in our installation guide.

Details of these can be found in our flooring selector on PI34 along with suitable methods of installation. Solid plank floors will need to be re-kilned for installation over underfloor heating which attracts a small price supplement.

How is a wooden floor fitted?

Except for our Strata and Essentials engineered boards which can also be floated, all floors in the Broadleaf range must be nailed or glued to the subfloor (underlying floor structure). Which method is recommended will depend on the product you choose and the type of subfloor you have. Basic guidance can be found in our flooring selector and further information in our installation guide, but our knowledgeable staff are always happy to advise or answer any queries.

Who should fit my floor?

How well your floor is fitted will be integral to the look and performance of the end result. In the absence of complicated site conditions most of our floors can be fitted by a competent amateur, provided they have the correct tools and follow the installation guide closely. Generally though we would advise that you use an experienced professional fitter, particularly if choose a parquet floor, have a less than perfect site, or complex shaped rooms. Please ask our staff for advice if you are in any doubt.

Will a wooden floor be thicker than a carpet?

Our Solid and Strata engineered floors will typically be a few mm thicker than good quality carpet and underlay, but any height difference between these and adjoining floors can be easily and discreetly accommodated with one of our thresholds and a small adjustment to the door. Our Essentials floors are approximately the same thickness as carpet and underlay.

How much flooring do I need?

You will need enough flooring to cover the floor area of the room plus wastage for cuts at the edge. Recommended wastage allowances are given in our flooring selector.

Will my floor move?

Wood is a hygroscopic material that responds to changes in temperature and humidity so it is quite normal to see small gaps between planks and blocks that vary over time in line with seasonal and atmospheric changes. As well as being characteristic of a real wood floor this is also part of its beauty.

Can my floor be fitted the day it is delivered?

No – it will need to be acclimatised for 7-14 days in order to adjust to the particular atmospheric conditions of your home prior to fitting. Please see the guidance below on 'What To Do Before Installation' for further details.

Does a wooden floor need a lot of maintenance?

Quite simply, no. The high performance finishing products that we use on our floors are designed for modern living and a simple regime of vacuum and damp mop, plus a quick application of a maintenance wax from time to time is all that is generally required to keep them looking good.

Keep maintenance to a minimum by placing dirt trapping mats at entrance doors and felt pads or castors on moving furniture. Full details on how to your floor in tip top condition can be found in our Aftercare Guide.

What To Do Before Ordering

Check that your chosen floor is suitable for its intended location and identify a suitable method of installation. Use the flooring selector on PI34 or ask our staff for guidance.

Make sure that at least the recommended wastage allowance has been added to the required area of flooring (see our flooring selector on PI34 for guidance).

Make sure our staff are aware of how your floor will be fixed so that they can recommend suitable fixing and finishing products.

Make sure that any room into which wood flooring is to be installed is free from damp. Beware of seasonal damp and ensure that a damp proof membrane or other method of preventing rising damp is present in ground floor rooms. If in doubt, consult a professional before having your floor installed.

Make sure that any new concrete or plaster is, or will be, fully dry and the heating has been run as per our installation guide prior to delivery of the floor.

Make sure that unless you are using a Broadleaf recommended fitter, whoever is installing your floor has read our installation guide and that they contact us with any queries as we cannot take responsibility for products installed outside our recommendations.

Discuss the installation with your fitter and make sure that you understand how your particular installation will work and are happy with this. Make sure that your fitter is aware of any preferences you have about the way the floor is laid – direction, arrangement of mixed width boards, colour variation etc – before they start.

Check that your fitter is happy that your subfloor meets the requirements of our installation guide and is suitable for the preferred fixing method for your floor. If not, preparation work may be necessary to resolve this prior to installation or you may need to adapt your product choice. If you need advice on the latter, just ask.

If you are intending to install a Broadleaf floor over underfloor heating, please make sure that you have read Section 8 of our installation guide and that you notify our sales staff before you order so that they can advise you accordingly. Please make sure that you have also notified your underfloor heating supplier so that they can specify your system accordingly. Bear in mind that the surface temperature under your wood floor must never exceed 27°C.

What To Do Before Installation

Make sure that your flooring is delivered into a room with normal living conditions – that is sealed, dry and heated, with a room temperature of between 15-24°C and relative humidity of between 40-65%.

Check your order carefully on delivery and advise us immediately of any query.

Acclimatise all flooring products for 7-14 days before installation – keep them in the room where they will be fitted, or a nearby room with similar environmental conditions, unwrapped and lattice stacked (criss-crossed) so that the air can circulate them.

Make sure that the room to be fitted is completely clear of furniture when the fitters arrive unless you have made alternative arrangements with them directly.

If you have underfloor heating ensure that this is set as outlined in Section 8 of our installation guide.

What To Do After Installation

Ensure that any finish applied in situ is left to cure completely as per manufacturers' guidelines before reinstating furniture and using the room.

Follow the advice in our Aftercare Guide to keep your floor and its finish in good condition.

If you have underfloor heating, follow the instructions in the installation guide to return this to normal running temperature after fitting and make sure that any future changes in temperature are gradual.

Maintain temperature and humidity in the house within normal ranges:

Temperature: 15-24°C

Relative Humidity: 40-65%

Sit back and enjoy your beautiful Broadleaf floor.

Floors Installation Guide

To be successful a wood floor must be properly installed into a suitable environment. The following guide explains how to properly install Broadleaf wood floors. We hope you will find it straightforward and easy to follow, but if you have any questions please contact us. Bear in mind that it is intended to be general guidance so if you have specific queries please direct these to our technical team who will be happy to help.

If you are not the end user of the floor, please make sure that they have been made aware of any installation choices relevant to their particular product selection and any issues that may apply to their site.

I/ Site Preparation

Careful site preparation is key to avoiding problems with wood floors after installation, so please check the following before any flooring is delivered:

Environment

Flooring should only be installed into normal living conditions; that is spaces that are sealed, dry, free from damp, heated and between 15 - 24°C and 40 - 65% relative humidity.

Damp

A wood floor should not be installed anywhere that suffers from damp. We advise the following checks to rule out obvious causes, but please bear in mind that damp is seasonal and may not be evident at the time of inspection. In the event of any concerns, an expert should be consulted before the flooring is ordered and all issues resolved before the flooring is delivered.

— Make sure that solid ground floor subfloors have a damp proof membrane. If not, do not proceed with installation until this is rectified. Broadleaf Ultra Dry is a paint on moisture barrier that can be easily applied to concrete sub-floors.

— Check that air bricks below suspended floors have not been removed or blocked up, that air circulation is sufficient to prevent moisture build up and that existing joists show no signs of moisture damage.

— Make sure that drains next to the house are free from leaves and debris so that they do not block and cause water build up against walls or under a suspended floor.

— Check that walls do not show signs of water ingress or damp.

— Check the relative humidity of the room. Readings outside the normal range for a heated environment (40 - 65%) could indicate the presence of damp.

Bear in mind that if a subfloor is sealed with a paint on damp proofing product you must not breach this with any floor fixings and must ensure that any adhesive you plan to use is compatible with it.

Plaster

All plastering in and near the room where a wood floor is to be fitted must be complete and fully dry before the flooring is delivered.

This will take at least 2 weeks from change of colour, which is

generally about 2 weeks from application of plaster to plasterboard and 4 weeks from plaster to render. Damp weather and other environmental conditions can extend this.

Pipes

Underfloor pipes (excluding underfloor heating which is dealt with separately) should be properly insulated to prevent hotspots and localised shrinkage. Although it is not always practical to deal with this retrospectively, check the existing floor with the heating on to identify any unusually warm areas. Resolve these by lagging pipes where they are accessible. Be aware that otherwise some localised shrinkage of boards may occur after fitting. This will normally only be an aesthetic issue and is unlikely to affect the structural integrity of the floor.

Subfloors

The condition of the subfloor will be integral to the stability and performance of the finished wood floor. All subfloors should be dry, level and free from dust.

Concrete subfloors must contain a damp proof membrane and have a moisture content of

no more than 4% (by weight) as measured with a Tramex concrete encounter meter. These should not be confused with a standard damp meter, they are specialist meters and can be borrowed from Broadleaf showrooms if required.

Generally, existing screeds should be below this level unless they are damp. New concrete up to 50mm thick will normally take approximately 1 month per inch (1 day per mm) to reach it. Thicker screeds can take proportionately longer.

A good preliminary moisture test is to fix a small area of plastic sheet to the surface of the concrete with airtight tape. After a couple of days, check the underside of the sheet. If there is no condensation present, then it is likely that the 4% level has been reached, but always check with a meter before proceeding to installation.

If you are going to glue fix flooring directly to a screed or float an engineered board over it, it must be level to within 3mm across 2 metres. Check this at survey stage and resolve any more significant imperfections with self-levelling compound or ply prior to delivery of the timber.

Before glue fixing, we also recommend the application of a primer to aid bonding and offer an additional moisture barrier. This must be compatible with the recommended adhesive.

To nail fix flooring above concrete, softwood battens will need to be fixed to it first. These must be dry (request them as such from builders' merchants) and at least 20mm x 50mm. They must be screw fixed at a maximum of 400mm centres at 90° to the intended direction of the floor and packed as necessary to ensure that the surface is level to within 3mm across 2mm. Insulation can be added between the battens if desired.

Timber subfloors should be structural flooring grade T&G plywood / chipboard or existing floorboards.

Plank flooring can be nail fixed directly to chipboard / plywood in whichever direction is preferred. For added stability and sound insulation we recommend using glue as a supplement to the nails, applied in strips every 300mm. This is particularly important when fixing to chipboard which does not hold nails as firmly as plywood over the long term. Engineered planks can be floated over this style of timber subfloor and parquet can be glued.

In the case of existing floorboards, these must be dry, reasonably level and firmly fixed. If they are not reasonably level it is normally easier to remove them and either fit new planks directly to the joists (see below) or replace them with a structural chipboard / plywood subfloor and fit to this instead (see above).

If they are reasonably level and on the ground floor, check that air bricks are present and clear, and that there is no moisture build up beneath the existing boards. Bear in mind that this must be the case all year round. Sound, rot free joists are a good indicator that this is the case. Cupping in the surface of the existing boards could highlight a

problem. If there are moisture issues, do not proceed with the installation until these have been resolved.

All being well, screw down any loose planks – check beneath them for services first – punch back any face nails to just below the surface of the planks and sand out any significant high points.

The new plank floor can then be nail fixed over the existing one at 90°, packing it if necessary to eliminate any residual unevenness in the surface of the old boards.

To fit the new plank floor in the same direction as the old one, it will first need to be overlaid with flooring grade plywood at least 6mm thick. Screw fix this to the old boards at regular intervals and then nail fix the new floor through this into the existing one. Again, in this instance it may be easier simply to remove the existing boards and fix a new, structural plank floor directly to the joists.

To fit a parquet floor over an existing plank floor – rather than replace it first with structural flooring grade chipboard / plywood – it will need to be prepared as noted above for a new plank floor laid in the same direction as the old one to create a level, unified subfloor onto which to glue.

Joists need to be structurally sound, dry, rot free, relatively level and at no more than 400mm centres to successfully support a plank floor. For ground floor installations the space beneath them must also be free of moisture and you must be confident that this is the case all year round. Always check that air bricks are present and have not been blocked up, that there is no moisture in the space beneath the joists, and that the joists themselves are sound and rot free. If there are any concerns, consult a damp expert and resolve any issues before proceeding with the installation.

Structural plank floors (Solid and Strata) can then be nail fixed at 90° to the joists, packing where

necessary to ensure that the floor is level.

Tile or stone floors are not recommended as subfloors for a wood floor. Ideally, these floor coverings should be removed and any wood floor fixed directly over the concrete subfloor beneath once this meets the required criteria. If this is not possible or practical, then a suitable damp proof membrane must be installed over the tile / stone followed by flooring grade T&G plywood at least 18mm thick. The new wood floor can then be fixed over this as recommended for the product. Remember that any nail fixing will need to remain within the thickness of the plywood.

Heating

Once any new concrete subfloor has reached the required moisture level and plaster is fully dry, the heating must be run to drive out any latent moisture before the flooring is delivered. Conventional heating should be run for a minimum of 2 weeks (even in summer). If the ambient temperature in the room is too high for the heating to activate at its normal level, you will need to raise the thermostat temperature to ensure that it does. For underfloor heating recommendations see Section 8.

Acclimatisation

All Broadleaf flooring products must be acclimatised for 7-14 days before installation. They should not be delivered to acclimatise until all concrete and plaster are fully dry (see above) and the heating has been run for a minimum of 2 weeks after this (see above).

In order to acclimatise the flooring must be kept in the room where it will be fitted, or one with similar environmental conditions, unwrapped and lattice stacked (criss-crossed) so that the air can circulate around it. In particularly dry or damp weather, or if using wide boards, err towards the upper end of the recommended acclimatisation period.

2/ Fixing Issues – Plank Floors

Board Direction

Conventionally, and to show them off to their best advantage, plank floors are laid towards the primary natural light source and along the length of the room. Consider this along with any subfloor restrictions, the shape of the room and end user preference before installation to decide the best direction for the floor.

Board Selection

When fitting a product that features noticeable variation, be it colour, length of board or grain, board selection will have a significant influence on the overall look of the finished floor. It is important to be sensitive to this and distribute any variation evenly to achieve a natural looking and attractive result. The best way to do this is to spread the boards out prior to installation so that the desired distribution can be agreed between the end user and the fitter and boards can be selected appropriately.

First Line

The first row of flooring sets the line for the whole floor so it is crucial that this is square. If necessary, cut the boards in the first row along their length to compensate for off square walls. If glue fixing, make sure that the first row is stable (that the adhesive has gone off) before pushing against it.

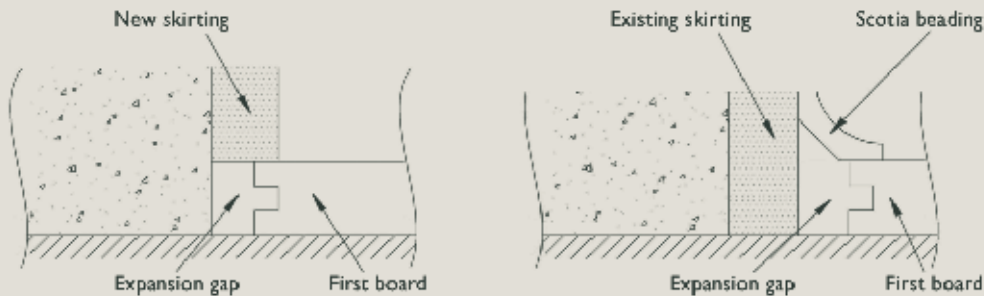
End Joints

End joints in adjacent rows of planks must be staggered at least 150mm apart and we recommend a minimum 250-300mm as this is more attractive. For the best aesthetic result, the position of end joints should be kept reasonably random by cutting different lengths of board to start rows.

Gaps

There will almost always be some slight gaps (1mm or so) between boards as you fit an acclimatised plank floor. Do not clamp boards to try and remove

Fig. I



these as this can cause expansion problems later on. Occasionally a board placed for fitting will create a bigger than normal gap due to minimal machining variations or uneven acclimatisation. Cut it in half and use it to start or finish a row.

3/ Fixing Issues – General

Expansion Gap

To accommodate the natural expansion and contraction that occurs in wood flooring a 15mm expansion gap is required around the entire perimeter of the room; this includes doorways, fireplaces, and any other 'obstacles' adjacent to the floor. Pay particular attention to door liners & plinth blocks which must either be cut to create an expansion gap under them, or have one left around them. For floors in excess of 6m wide additional expansion of approx 1mm (penny gap) per metre width will need to be integrated evenly across the floor.

To create an expansion gap, insert wedges between the edge of the floor and the wall during fitting. Once fitting is complete and any adhesive is dry, remove them and cover or fill the gap. To create expansion across the floor, insert a thin separator between boards as you knock them together (approx every third board for wide boards and every fifth board for narrow ones).

To cover the expansion gap either fit beading onto existing skirting or new skirting (fig I). When butting up against thresholds, fireplaces, quarry

tiles, brick or staircases the neatest way to fill the gap is with cork strip.

Floor Levels & Thresholds

To maintain the required expansion gap a threshold must always be installed at doorways. Where there is no change in floor level between rooms use either a T bar, leaving half the expansion gap either side of the fixing strip, or cut a level threshold board and fit cork strip on either side.

Where the floor levels differ between rooms, use an adjusting threshold to accommodate the variation neatly. We have standard adjusting thresholds for variations of up to 15mm and can make them to measure for larger differences. Thresholds can be finished to complement all of our floors.

Standard thresholds should be fixed as shown in fig 2 leaving the expansion gap underneath. Made to measure thresholds up to 15mm should be fixed as shown in fig 3 with a cork strip either side to maintain the expansion gap. Thicker thresholds can be stepped with the expansion gap beneath as shown in fig 4 or square with a cork strip as in fig 5.

Matwells

A matwell cut into the floor in front of any regularly used entry doors is the best way to protect a wood floor and its finish against damage from dirt and grit brought in from outside. We can supply coir matting for these that can be cut to size and replaced as it wears. Matwells look most attractive set forward

slightly (say 100mm) from the doorway and 'framed' with edging strips that match or contrast with the flooring according to taste. These can be cut from the flooring or ordered separately and should always be well fixed.

4/ Plank Fixing Methods

Suitable plank fixing methods will depend on both the product selected and the subfloor to which it is being fixed. Please see our flooring selector on PI34 for guidance and if you have any queries speak to our sales staff.

Floating

This involves laying the wood floor over the subfloor rather than fixing to it and should only be used when fitting our engineered plank floors over a structural subfloor.

To do this, first lay suitable underlay over the subfloor. We recommend Fibreboard where there is no underfloor heating and no sound reducing requirement. Where there is a sound reducing requirement but no underfloor heating we recommend Technics 6, and where there is underfloor heating (with or without a sound reducing requirement) we recommend Silent Gold. Always check with the underfloor heating supplier that the recommended underlay is compatible with their system, and if not contact our technical team about suitable alternatives.

Once acclimatised, fit the planks over the underlay, gluing the tongue & groove joints with

Lecol PVAC D3 adhesive or equivalent. Use a rubber mallet with an offcut of the flooring as a knocking block to protect the tongues as you knock the boards together. Follow the manufacturer's instructions for the application of the adhesive.

Secret Nailing

As the name suggests, this method of nailing is not visible once the floor is installed. Specially designed nails are driven at an angle through the tongue of one board into the subfloor and covered by the groove of the next.

The best way to do this is with a Portanailer gun that clamps boards together at the right tension and protects the tongue from damage as it nails. These are available to hire from Broadleaf showrooms and good tool hire stores if required. To fix to a timber subfloor which is less than 25mm thick, and has services or concrete beneath, you will need to use 38mm portanails to avoid exceeding the depth of the subfloor and possibly damaging pipes or wires. Otherwise use standard 50mm portanails.

Fit the acclimatised boards together using a rubber mallet with an offcut of the flooring as a knocking block to protect the tongues as you knock the boards together. Nail them at every joist / batten or every 400mm

You will not be able to secret nail the first and last board(s) as the wall will block the Portanailer. If you are fitting a finished floor these can either be glued to the subfloor / joists and

Fig.2

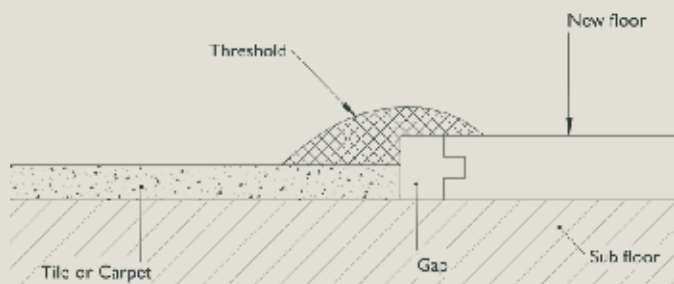


Fig.3

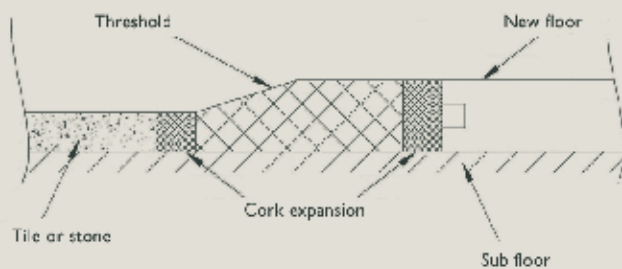


Fig.4

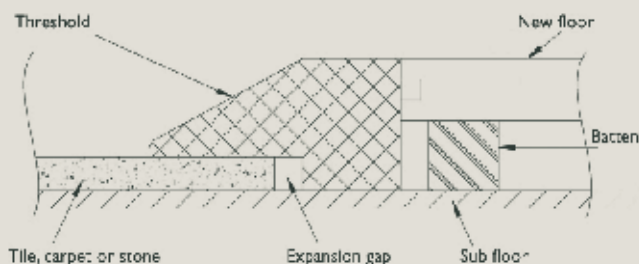
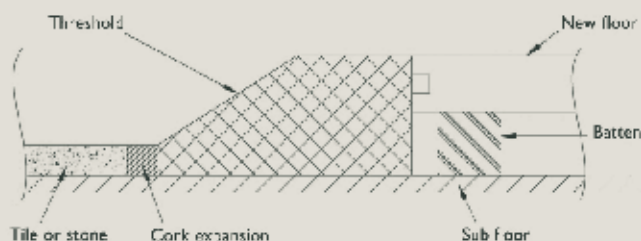


Fig.5



weighted until the glue has dried, or fixed through the face at the edge using a pilot drill and portanails knocked in vertically with a hammer so that they can be covered by the skirting / beading when this is fitted. A combination of these methods may be the most effective.

If you are fitting an unfinished floor you can also face fix these boards using screws and plugs at every joist / batten or every 400mm. If you do this at the edge of the board the fixings will be part covered by the skirting / beading when it is fitted.

Face Fixing

This involves fixing boards through the face and covering the fixings with discreet timber plugs. This is only suitable for unfinished boards and is required for 200mm solid boards if these are secret nail fixed. It can also be done to add a traditional aesthetic detail.

To face fix a board, first drill pilot holes through its face approx 25mm from each edge over every other joist / batten or approx every 800mm. Offset adjacent rows so that adjacent fixings. Countersink screws into the holes and then cover with timber plugs. Fix these using wood glue, lining up the grain of the plugs with the grain of the board as far as possible for minimum visibility and bang in firmly. Once dry, cut flush with a sharp chisel before sanding and sealing the floor.

Glue Fixing

Glue fixing involves applying suitable adhesive to the surface of a suitable load bearing subfloor and then fixing the wood flooring to this. Suitable subfloors are concrete, structural flooring grade plywood / chipboard or non- structural flooring grade plywood fitted over an existing structural plank floor. We recommend the use of Broadleaf Ultra adhesive or equivalent.

Making sure that the groove side of the board is facing the wall, select, cut and fit together the

first 3 rows of acclimatised boards before applying any glue to the floor. Use a rubber mallet with an offset of the flooring as a knocking block to protect the tongues as you knock the boards together.

Apply the adhesive to the subfloor as per the instructions using the recommended comb size to ensure that the correct amount is applied. Never apply adhesive to the boards. Fit the prepared boards to the adhesive, weighting if necessary, and leave these to bond fully before continuing to fit the rest of the room.

If you get any adhesive on the top face of the boards, wipe this off immediately with a dry cloth. Broadleaf Ultra can also be removed once dry by rubbing carefully with a dry cloth. This may dull the sheen of the finish but in this case the first application of maintenance wax should blend this back in. Please bear in mind that this may not be the case with other adhesives.

Do not walk on the floor until the adhesive is fully dry.

5/ Parquet Fixing Methods

Parquet floors must be glue fixed to a suitable load bearing subfloor. Suitable subfloors are concrete, structural flooring grade plywood / chipboard or non-structural flooring grade plywood fitted over an existing structural plank floor. We recommend the use of Broadleaf Ultra adhesive or equivalent.

Parquet blocks can be fitted in a number of different patterns depending on their dimension. Chevron parquet is fitted in a single classic pattern. Parquet flooring can be fitted with or without a border, and traditional parquet which is sanded and sealed in situ can also be fitted with tramlines. Our sales staff will be happy to advise on possible design options if desired.

Parquet flooring is typically more complex to install than plank flooring and so we

generally recommend that it is installed by a professional fitter, particularly if it needs to be sanded and sealed in situ. An installation guide for parquet flooring is available from our technical team on request – technical@broadleaftimber.com – but please note that this is designed for professional use. If you would like to fit your own parquet floor, please contact our technical team for advice on the most suitable product and to discuss what is involved in more detail.

6/ Sanding

The only Broadleaf plank floors that will need sanding are those from our Classic collection. These are supplied machine sanded, so should normally only need a light final sand to remove any marks from the top surface. We recommend using a hand held 'orbital' sander or similar, fitted with 120 grit paper and sanding with the grain of the timber.

Our Traditional Parquet will also need to be sanded but this is a more complex process and we would recommend that it is only undertaken by a professional. Traditional Parquet is normally sanded in two stages and filled in between. If you wish to sand your own Traditional Parquet floor, please contact our technical team who can discuss what is involved and offer additional guidance.

7/ Finishing

The only Broadleaf plank floors that will need to be finished in situ are those from our Classic collection. We recommend using Broadleaf Hardwax Oil to seal these once they have been sanded in line with the guidance above.

Original & Pulman Vintage Parquet floors will also need to be finished in situ. These are supplied semi-finished and require 2 coats of the appropriate Broadleaf Hardwax Oil after fitting (see product

section for details). They do not require sanding.

If preferred, these products can be supplied with a factory finish for a small supplement so that they do not need to be finished in situ. Please ask our staff for details if this is the case.

If a floor is to be finished in situ, make sure you follow our basic guidance below and follow the manufacturers' instructions for the selected finish:

– Always make sure that the floor is clean, dry and free of dust before applying any finish.

– Remove dust with a vacuum cleaner rather than a brush to minimise dust in the air.

– Always allow a finish to cure fully before moving furniture back in and using the floor as normal.

– Do not skimp on recommended drying times between coats or coverage as this can significantly reduce the performance of the finish.

– Make sure the room is warm (min 10°C) and well ventilated during application and drying.

– In high wear areas, choose a finish that can be locally repaired.

8/ Underfloor Heating

Broadleaf have been successfully supplying wood floors to be fitted over underfloor heating for nearly 20 years. All of our floors have options that can be installed in this situation, including some solid ones, as being manufacturers means that we can control the drying of our timber to make this possible. See our flooring selector on PI34 for details of compatible options for each product.

The following advice is the result of considerable experience and covers the system types most commonly used by our clients, but underfloor heating is an evolving industry so if there is any conflict between our recommendations and those of the underfloor heating supplier,

please speak to our technical team who will be happy to help resolve any queries or offer any specific advice as required.

System Temperature

The surface temperature under a wood floor must never exceed 27°C. If underfloor heating is to be fitted underneath a wood floor the system must therefore be designed to ensure that this is the case. Where a system is being designed for an individual project, make sure that the supplier is aware that a wood floor is to be fitted over it so that they can design it accordingly. We would strongly recommend the use of combined floor / air thermostats to ensure that this is the case. This is not expensive and provides a reassuring back up that overrides the system if for any reason the maximum floor temperature is reached and protects the floor. Where an off the shelf system is being used and there is less control of the surface temperature by specification, we would always recommend the use of a floor thermostat which can override the system if the temperature reaches 27°C.

Product

Check that the product to be fitted is marked as suitable for use over underfloor heating in our flooring selector on PI34. Solid plank floors will need to be ordered to be re-kilned for this purpose – there is a small additional charge for this and it will be marked separately on the quote and invoice.

If the underfloor heating system is being individually specified, make the supplier aware of the proposed product and fitting method so that these can be allowed for. In the case of an off the shelf system, check that this complies with any technical requirements and if not consider an alternative system, or contact us to discuss alternative product options.

Bear in mind that if a wood floor is installed over a system designed for ceramic tiles for example, the room may not reach the desired temperature

or may take longer than expected to do so. Similarly, if it is fitted over a system designed for carpet, the temperature under the floor may regularly exceed the 27°C maximum.

Site preparation

As with any other installation, the site and subfloor when fitting over underfloor heating must meet the basic criteria laid out in Section 1 of this guide.

The underfloor heating must then be run for 3 weeks before the timber is delivered, at normal room temperature unless the ambient room temperature is too high to activate the thermostat at this level.

In this case raise the thermostat temperature so that the heating comes on to warm the screed. Although this may cause some discomfort in the summer months it is vital to ensure the evaporation of latent humidity. At this stage, make sure that the water temperature at the manifold is set to the specified temperature (this is normally 40°- 45°C for wood floors) and that the floor thermostat is set as master with a maximum of 27°C.

Timber should then be acclimatised as normal with the heating set at normal room temperature.

Fixing methods for water systems set in screed

Broadleaf 105/150mm Solid plank floors that have been re-kilned or Strata engineered plank floors can be nail fixed over this type of system.

Firstly, either battens will need to be set into the screed, or it will need to be overlaid with 18mm flooring grade T&G plywood. Inset battens will need to be notched to allow the pipe to run across the floor and must sit at least as high as the surface of the screed. If you require guidance on setting battens into a screed, please contact our technical team.

Broadleaf 105mm Solid planks that have been re-kilned, Essentials & Strata engineered

planks and all of our Parquet flooring can be glue fixed over this type of system. Planks, Essentials and Vintage Parquet can be fixed as normal using Broadleaf Ultra adhesive. Traditional Parquet should be fitted using Broadleaf Ultra adhesive as normal, then undercoated with the desired finish and left with the heating running normally for a period of 3 weeks so that any initial settling movement can take place. It can then be filled, sanded and finished as normal.

Essentials & Strata engineered planks can be floated as normal over this type of system using a compatible underlay – we recommend Silent Gold. Bear in mind that the underlay cannot be in direct contact with the heating elements, so these will either need to be completely enclosed (by a protective foil or mesh) or covered by a thin latex screed.

Fixing methods for dry water systems

Where a water system is set between joists with conductor plates to transfer the heat, or into a floating timber subfloor, these should be overlaid with 18mm flooring grade T&G plywood before the wood flooring is fitted to prevent 'hotspots' and abnormal shrinkage.

Broadleaf 105/150mm Solid planks that have been re-kilned and Strata engineered planks can then be nail fixed to this as normal.

Broadleaf 105mm Solid planks that have been re-kilned, Essentials & Strata engineered planks and Parquet flooring can be glue fixed as for systems set in screed above.

Essentials & Strata engineered planks can be floated as normal using a compatible underlay – we recommend Silent Gold. Bear in mind that the underlay cannot be in direct contact with the heating elements, so these will either need to be completely enclosed (by a protective foil or mesh) or covered by a thin latex screed.

Electric Systems

Electric underfloor heating systems are most commonly supplied in mat format.

To glue or nail fix wood flooring over these they will first need to be overlaid with either 18mm flooring grade T&G plywood or a 12mm latex screed (assuming that this is compatible with the system).

Broadleaf 105/150mm Solid planks that have been re-kilned and Essentials & Strata engineered planks can then be nail fixed to this as normal. Broadleaf 105mm Solid planks that have been re-kilned, Essentials & Strata engineered planks and Parquet flooring can be glue fixed as for water systems set in screed above.

Essentials & Strata engineered planks can be floated as normal using a compatible underlay – we recommend Silent Gold. Bear in mind that the underlay cannot be in direct contact with the heating elements, so these will either need to be completely enclosed (by a protective foil or mesh) or covered by a thin latex screed.

Also, if the preferred fitting method requires that the underfloor heating be overlaid with 18mm plywood or a latex screed and this is not part of the standard floor construction for the system, please ensure that this has been discussed with the supplier and that the end user understands any implications for the performance of the heating system.

Running the Heating

The night before the flooring is installed, the thermostat must be turned down so the heating is not actually warming the surface of the floor. This status must be maintained whilst the flooring is fitted.

Once fitting is complete, the thermostat temperature should be increased by 1 degree per day until it reaches normal running temperature. Thereafter, any temperature changes should be made gradually.

Additional Advice

Should you have any queries or need any site specific advice we will be very happy to help. Please contact our technical helpline:

T: 01269 851 987

E: technical@broadleaftimber

Broadleaf Flooring Selector

Format	Width (mm) where plank products are available in multiple widths in the same format these are compatible	Thickness (mm) Length (mm) *up to 5% may be shorter	Requires Finishing In Situ see product information for details	Can be Prefinished to order	Solid Option	Strata Option 100% Oak engineered plank	Essentials Option Premium ply backed engineered format	Wastage Guide (%) *+ 50% if mixing single width products or area below 15m2	Compatible with UFH subject to installation guidelines. Solid planks must be ordered reknifed for this purpose.	Can be Floated subject to Broadleaf installation guidelines	Can Be Glue Fixed – no UFH subject to Broadleaf installation guidelines	Can be glue fixed over UFH subject to Broadleaf installation guidelines	Can Be Secret Nail Fixed subject to Broadleaf installation guidelines		
Classic Oak															
Railway	Plank	150/200/300	20	*1000 - 2400	Y	Y	N	Y	N	*5	Y	Y	BLT Ultra	BLT Ultra	Y
Cottage / Elegance / Gallery	Plank	105	20	*1000 - 2400	Y	Y	Y	N	N	*5	Y	N	BLT Ultra	BLT Ultra	Y
Cottage / Elegance / Gallery	Plank	150	20	*1000 - 2400	Y	Y	Y	Y	N	*5	Y	Strata	BLT Ultra	Strata BLT Ultra	Y
Cottage / Elegance / Gallery	Plank	200	20	*1000 - 2400	Y	Y	Y	Y	N	*5	Strata	Strata	BLT Ultra	Strata BLT Ultra	Strata
Extra Wide	Plank	250/300	20	*2000 - 3000	Y	Y	N	Y	N	*5	Y	Y	BLT Ultra	BLT Ultra	Y
Nuances															
All shades	Plank	105	20	*1000 - 2400	N	N/A	Y	N	N	*5	Y	N	BLT Ultra	BLT Ultra	Y
All shades	Plank	150	20	*1000 - 2400	N	N/A	Y	Y	N	*5	Y	Strata	BLT Ultra	Strata BLT Ultra	Y
All shades	Plank	200	20	*1000 - 2400	N	N/A	Y	Y	N	*5	Strata	Strata	BLT Ultra	Strata BLT Ultra	Strata
All shades	Plank	250 / 300	20	*2000 - 3000	N	N/A	N	Y	N	*5	Y	Y	BLT Ultra	BLT Ultra	Y
All shades	Plank	190	15	*1860	N	N/A	N	N	Y	*5	Y	Y	BLT Ultra	BLT Ultra	N
All Shades	Chevron	90	21	510	N	N/A	Y	N	N	*10 - 15	Y	N	BLT Ultra	BLT Ultra	N
All Shades	Block	95	14	600	N	N/A	N	N	Y	*10 - 15	Y	N	BLT Ultra	BLT Ultra	N
All Shades	Chevron	95	14	505	N	N/A	N	N	Y	*10 - 15	Y	N	BLT Ultra	BLT Ultra	N
Artisan															
All shades	Plank	150	20	*1000 - 2400	N	N/A	N	Y	N	*5	Y	Y	BLT Ultra	BLT Ultra	Y
All shades	Plank	200	20	*1000 - 2400	N	N/A	N	Y	N	*5	Y	Y	BLT Ultra	BLT Ultra	Y
All shades	Plank	300	20	*2000 - 3000	N	N/A	N	Y	N	*5	Y	Y	BLT Ultra	BLT Ultra	Y
Brushed & Burned															
All shades	Plank	105	20	*1000 - 2400	N	N/A	Y	N	N	*5	Y	N	BLT Ultra	BLT Ultra	Y
All shades	Plank	150	20	*1000 - 2400	N	N/A	Y	Y	N	*5	Y	Strata	BLT Ultra	Strata BLT Ultra	Y
All shades	Plank	200	20	*1000 - 2400	N	N/A	Y	Y	N	*5	Strata	Strata	BLT Ultra	Strata BLT Ultra	Strata
All shades	Plank	250 / 300	20	*2000 - 3000	N	N/A	N	Y	N	*5	Y	Y	BLT Ultra	BLT Ultra	Y
Heritage															
All shades	Plank	105	20	*1000 - 2400	N	N/A	Y	N	N	*5	Y	N	BLT Ultra	BLT Ultra	Y
All shades	Plank	150	20	*1000 - 2400	N	N/A	Y	Y	N	*5	Y	Strata	BLT Ultra	Strata BLT Ultra	Y
All shades	Plank	200	20	*1000 - 2400	N	N/A	Y	Y	N	*5	Strata	Strata	BLT Ultra	Strata BLT Ultra	Strata
All shades	Plank	250/300	20	*2000 - 3000	N	N/A	N	Y	N	*5	Y	Y	BLT Ultra	BLT Ultra	Y

	Format	Width (mm) where plank products are available in multiple widths in the same format these are compatible	Thickness (mm)	Length (mm) *up to 5% may be shorter	Requires Finishing In Situ see product information for details	Can be Prefinished to order	Solid Option	Strata Option 100% Oak engineered plank	Essentials Option Premium ply backed engineered format	Wastage Guide (%) *+ 50% if mixing single width products or area below 15m2	Compatible with UFH subject to installation guidelines. Solid planks must be ordered reknifed for this purpose.	Can be Floated subject to Broadleaf installation guidelines	Can Be Glue Fixed – no UFH subject to Broadleaf installation guidelines	Can be glue fixed over UFH subject to Broadleaf installation guidelines	Can Be Secret Nail Fixed subject to Broadleaf installation guidelines
Old House															
All shades	Plank	105	20	*1000 - 2400	N	N/A	Y	N	N	*5	Y	N	BLT Ultra	BLT Ultra	Y
All shades	Plank	150	20	*1000 - 2400	N	N/A	Y	Y	N	*5	Y	Strata	BLT Ultra	Strata BLT Ultra	Y
All shades	Plank	200	20	*1000 - 2400	N	N/A	Y	Y	N	*5	Strata	Strata	BLT Ultra	Strata BLT Ultra	Strata
All shades	Plank	250 / 300	20	*2000 - 3000	N	N/A	N	Y	N	*5	Y	Y	BLT Ultra	BLT Ultra	Y
Tempest															
All shades	Plank	105	20	*1000 - 2400	N	N/A	Y	N	N	*5	Y	N	BLT Ultra	BLT Ultra	Y
All shades	Plank	150	20	*1000 - 2400	N	N/A	Y	Y	N	*5	Y	Strata	BLT Ultra	Strata BLT Ultra	Y
All shades	Plank	200	20	*1000 - 2400	N	N/A	Y	Y	N	*5	Strata	Strata	BLT Ultra	Strata BLT Ultra	Strata
All shades	Plank	250 / 300	20	*2000 - 3000	N	N/A	N	Y	N	*5	Y	Y	BLT Ultra	BLT Ultra	Y
Metro															
All shades	Plank	105	20	*1000 - 2400	N	N/A	Y	N	N	*5	Y	N	BLT Ultra	BLT Ultra	Y
All shades	Plank	150	20	*1000 - 2400	N	N/A	Y	Y	N	*5	Y	Strata	BLT Ultra	Strata BLT Ultra	Y
All shades	Plank	200	20	*1000 - 2400	N	N/A	Y	Y	N	*5	Strata	Strata	BLT Ultra	Strata BLT Ultra	Strata
All shades	Plank	250 / 300	20	*2000 - 3000	N	N/A	N	Y	N	*5	Y	Y	BLT Ultra	BLT Ultra	Y
All Shades	Chevron	90	21	510	N	N/A	Y	N	N	*10 - 15	Y	N	BLT Ultra	BLT Ultra	N
All Shades except Fired options	Plank	190	15	*1860	N	N/A	N	N	Y	*5	Y	Y	BLT Ultra	BLT Ultra	N
All Shades except Fired options	Block	95	14	600	N	N/A	N	N	Y	*10 - 15	Y	N	BLT Ultra	BLT Ultra	N
All Shades except Fired options	Chevron	95	14	505	N	N/A	N	N	Y	*10 - 15	Y	N	BLT Ultra	BLT Ultra	N
Coastal & Country															
All shades	Plank	105	20	*1000 - 2400	N	N/A	Y	N	N	*5	Y	N	BLT Ultra	BLT Ultra	Y
All shades	Plank	150	20	*1000 - 2400	N	N/A	Y	Y	N	*5	Y	Strata	BLT Ultra	Strata BLT Ultra	Y
All shades	Plank	200	20	*1000 - 2400	N	N/A	Y	Y	N	*5	Strata	Strata	BLT Ultra	Strata BLT Ultra	Strata
All shades	Plank	250 / 300	20	*2000 - 3000	N	N/A	N	Y	N	*5	Y	Y	BLT Ultra	BLT Ultra	Y
Traditional Parquet															
All grades	Block	70	21	280	Y	N	Y	N	N	*10 - 15	Y	N	BLT Ultra	BLT Ultra	N
All grades	Block	90	21	600	Y	N	Y	N	N	*10 - 15	Y	N	BLT Ultra	BLT Ultra	N
All grades	Chevron	90	21	510	Y	N	Y	N	N	*10 - 15	Y	N	BLT Ultra	BLT Ultra	N

Format		Width (mm) where plank products are available in multiple widths in the same format these are compatible	Thickness (mm)	Length (mm) *up to 5% may be shorter	Requires Finishing In Situ see product information for details	Can be Prefinished to order	Solid Option	Strata Option 100% Oak engineered plank	Essentials Option Premium ply backed engineered format	Wastage Guide (%) *+ 50% if mixing single width products or area below 15m ²	Compatible with UFH subject to installation guidelines. Solid planks must be ordered reknifed for this purpose.	Can be Floated subject to Broadleaf installation guidelines	Can Be Glue Fixed – no UFH subject to Broadleaf installation guidelines	Can be glue fixed over UFH subject to Broadleaf installation guidelines	Can Be Secret Nail Fixed subject to Broadleaf installation guidelines
Original Vintage Parquet															
All shades	Block	70	21	280	Y	Y	Y	N	N	*10 - 15	Y	N	BLT Ultra	BLT Ultra	N
All shades	Block	90	21	600	Y	Y	Y	N	N	*10 - 15	Y	N	BLT Ultra	BLT Ultra	N
All Shades	Chevron	90	21	510	Y	Y	Y	N	N	*10 - 15	Y	N	BLT Ultra	BLT Ultra	N
Pullman Vintage Parquet															
All shades	Block	70	21	280	Y	Y	Y	N	N	*10 - 15	Y	N	BLT Ultra	BLT Ultra	N
All shades	Block	90	21	600	Y	Y	Y	N	N	*10 - 15	Y	N	BLT Ultra	BLT Ultra	N
All Shades	Chevron	90	21	510	Y	Y	Y	N	N	*10 - 15	Y	N	BLT Ultra	BLT Ultra	N
Nordic Parquet															
All shades	Block	95	14	600	N	N/A	N	N	Y	*10 - 15	Y	N	BLT Ultra	BLT Ultra	N
All Shades	Chevron	95	14	505	N	N/A	N	N	Y	*10 - 15	Y	N	BLT Ultra	BLT Ultra	N
Painted & Distressed															
All Plank Shades	Plank	105	20	*1000 - 2400	N	N/A	Y	N	N	*5	Y	N	BLT Ultra	BLT Ultra	Y
All Plank Shades	Plank	150	20	*1000 - 2400	N	N/A	Y	Y	N	*5	Y	Strata	BLT Ultra	Strata BLT Ultra	Y
All Plank Shades	Plank	200	20	*1000 - 2400	N	N/A	Y	Y	N	*5	Strata	Strata	BLT Ultra	Strata BLT Ultra	Strata
All Plank Shades except Waterville	Plank	250 / 300	20	*2000 - 3000	N	N/A	N	Y	N	*5	Y	Y	BLT Ultra	BLT Ultra	Y
All Parquet Shades	Block	70	21	280	Y	Y	Y	N	N	*10 - 15	Y	N	BLT Ultra	BLT Ultra	N
All Parquet Shades	Block	90	21	600	Y	Y	Y	N	N	*10 - 15	Y	N	BLT Ultra	BLT Ultra	N

Possible Fitting Methods for your subfloor

All subfloors must be dry and level as per our installation guide. Fitting method must be suitable for selected product.

	Concrete	Chipboard / Ply*	Existing Floorboards	Tile / Stone
Glue Plank	Y	Y	Y – over min 6mm ply	Y – over min 18mm ply
Glue Parquet	Y	Y	Y – over min 6mm ply	Y – over min 18mm ply
Secret Nail Plank	Y – requires battens	Y	Y – at 90° to existing floor	Y – over min 18mm ply
Float Engineered Plank	Y	Y	YY – over min 6mm ply	Y – over min 18mm ply

Please note that from time to time specifications of products may change after publication so please confirm details prior to ordering.

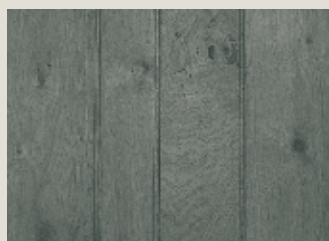
Internal Doors

Essential Information

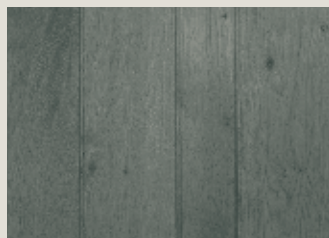
Oak Plank Doors

Product Information

Broadleaf Oak Plank Doors are made to measure from solid European Oak in your choice of Cottage or Elegance grade. Classic Doors are made up to 915mm x 2085mm, Cupboard doors up to 750mm x 900mm and Fire Doors up to 850mm x 2085mm.



Cottage – a more rustic grade with large and small knots and richer colour variation.



Elegance – a less rustic grade with smaller knots and more even tones.

Door planks have a bead and butt profile on the front and a simple chamfer on the reverse; knots are filled as necessary and they are machine sanded.

Classic Plank Doors have 3 ledges on the reverse and although diagonal braces are not required for stability they can be supplied as a decorative detail. Fire Doors are made from two thinner planks with an intumescent layer between; they have 4 ledges on the reverse due to their weight.

Classic & Fire Plank doors are finished with traditional rosehead nails on the face, but these are decorative so you can order your doors without if you prefer.

Oak Plank Doors require traditional 'T' or strap hinges and the side of the door that

these are fitted to will open towards you.

Where doors are to be hinged on the face, we stop the ledges slightly short of the edge to accommodate the door stop and bevel them all round. Where doors are to be hinged on the rear, we run the ledges through to the edge to prevent an ugly gap under the hinge and bevel them top and bottom only. In this case we supply a door block with the door to take the latch so that it can be aligned with the hinges.

For this reason we will need to confirm which side of the door the hinges will be fixed to when you order.

Measurement

To avoid the need for onsite adjustments, whoever is going to fit your doors should measure them. Measurements will need to take account of any existing or intended floor coverings.

Installation and Ironmongery

Full size plank doors should be hung on traditional T or strap hinges at least 15" long. These are not supplied with the doors and should be purchased separately.

Oak plank doors are closed using a Suffolk or Cottage style latch. To fit a Suffolk latch, a slot of approx 6mm x 25mm will need to be cut in the door for the thumb latch element. The 'staple' is tapped through the door and the sharp ends knocked back against the timber on the other side or pinched off. The keep for the latch is cut into the architrave.

Oak Panelled Doors

Product Information

Our panelled doors have a stable softwood core, 18mm solid oak wear strips at each side and oak veneered panels surrounded by integral solid oak mouldings. They will have some natural colour variation and there is a slight difference between the panel construction of standard doors and fire doors.

Doors are available in a choice of widths, depending on design, as shown in the table below. They are 40mm thick, except fire doors which are 44mm, and 1981mm high. Bespoke sizes to 1000mm x 2100 are also available to order.

Doors can be adjusted laterally up to 10mm on each side and vertically: up to 25mm from the top and 50mm from the bottom.

Installation and Ironmongery

Panelled doors should be hung on 3 good quality butt hinges suitable for their weight (approx 25kg) and fitted with mortice latches / locks and handles. These are not supplied with the doors and should be purchased separately.

Please note that slamming strips set for 35mm doors will need to be adjusted. If you are fitting fire doors, please note that closers and smoke seals may be required to comply with building regulations. We can supply oak door liners with integral smoke seals to match these doors.

Door finishing

Doors that are not ordered pre-finished in our workshops will need to be sealed with an interior wood finish such as our Hardwax Oils. If doors are ordered pre-finished please take care during fitting not to damage the finish.

Door storage

Plank doors should be stored flat and raised off the floor with blocks or another suitable

support that will not damage them. Panelled doors should be stored flat with a solid support that will not damage their surface (such as a sheet of chipboard) between the bottom door and the floor

Doors should only be stored in a room where any wetworks are fully dry and with normal living conditions as defined in Section 1 of our Flooring Installation Guide.

Oak Door Liners

Product Information

Oak door liners are available in Cottage or Elegance grade. They are made from solid oak and are un-notched. Standard liners are 132mm wide and made to measure liners are available in any width up to 200mm. They are 24mm thick and supplied complete with slamming strips (door stops). Options with integral smoke seals to be used with re doors are also available.

Installation

Oak door liners should only be fitted after plastering is complete and fully dry, as wet plaster is likely to warp them and will react with the tannin in the oak and turn them purple. To create a at edge against which to plaster, use waste timber set the correct distance back to accommodate the oak liner once the plaster is fully dry. Fit oak liners using screws of suitable depth covered with slamming strips or wooden plugs.

	4 Panel	6 Panel	Half Glazed	10 Pane	15 Pane
2'0	✓	✓	x	x	x
2'3"	✓	✓	✓	✓	x
2'6"	✓	✓	✓	✓	✓
2'9"	✓	✓	✓	x	✓
Bespoke	✓	✓	✓	✓	✓
Fire (FD30)	✓	✓	x	x	x

External Doors

Essential Information

Product Information

Broadleaf External Doors are all made from beautiful solid wood and traditionally handbuilt in our workshops. All designs are available in French Oak and most are also available in a paintable option combining sustainable exotic hardwood and Oak for additional stability. This and other options for each design are shown on the table below.

Due to our Great British climate, and the fact most people shy at the sort of regular adjustments traditionally made to exterior joinery in response to the weather, our doors should ideally be fitted into porches or entrances not directly exposed to elements. Should you fit them elsewhere they are likely to require regular rather than just occasional seasonal adjustment.

With the exception of French Doors which come with a frame as standard, all of our external doors, frames and side panels are sold separately so that you can order the elements that you require to create your entrance.

All items are made to measure. Published prices are for doors and frames to 1000mm x

2100mm, doors to 900mm x 2000mm and side panels to 500mm x 2100mm. Larger sizes can be made for a supplement design permitting.

Finishing

Broadleaf Oak Exterior Doors are supplied machine sanded to be sealed with the finish of your choice. Broadleaf Paintable Exterior Doors are supplied primed ready for paint. In both cases they must be sealed before fitting with a product suitable for exterior use, in line with manufacturers instructions, all round, including under hinges or other furniture.

If any finish or paint is removed as part of fine tuning during the installation process, this must be reapplied in full (all coats).

For Oak Exterior Doors, we recommend finishing with Osmo UV Protection Oil Extra 420. This is a natural oil finish which will protect the timber but allow the door to weather to a grey patina over time.

If you wish to enhance the natural oak colour of your Oak Exterior Door or finish it in a different tone, we recommend using Osmo Natural Oil Woodstain as an undercoat to

the 420 UV Protection Oil.

These finishes can be ordered separately. They can also be applied to your door in our workshop if you prefer, but in this case you will almost certainly need to order spare finish so that whoever is fitting your door can re-touch any areas exposed as a result of fine tuning during installation.

Please bear in mind that any finish will require regular re-application if it is to remain effective – this will normally be at least annually, but will depend on product and how it wears. Failure to maintain your finish is likely to lead to abnormal movement in your door.

Furniture

All Broadleaf External Doors are supplied without furniture but we do offer a selection of External Door Furniture that can be ordered separately should you wish.

Broadleaf External Doors are not supplied pre-hung and should be hung in situ into a frame that is secure and square in its final position using 3 good quality 3" x 4" ball bearing hinges suitable for their weight (60 – 80kg depending on size

and design).

A traditional style weather bar is fitted into all of our door frames. This is an elegant strip of steel or brass depending on your preference that protrudes from the base of the frame by approximately 12mm to prevent rain being blown in under the door. You can request that this is omitted but in this case you will need to fit an alternative when the door is installed.

Design Drawings

Once you have chosen your preferred design and provided us with dimensions, we will prepare an individual design drawing for you to accompany your quote.

This will show you how your door will look and include your particular specification details. Any amendments required can be made simply and easily by our design team and the final drawing will need to be signed off to confirm your order. We would always recommend that this drawing is discussed with whoever is fitting your doors and has measured them and that they also sign this off.

Drip Bars

All of our external doors, with the exception of the Chateau, can be fitted with a drip bar if

Options	Fermette	Manoir	Chateau	Edwardian	Georgian	Bank
Stable	✓	x	x	x	x	x
Vision Panel	✓	x	x	x	x	x
Part Glazed	✓	x	x	✓	✓	x
Square Head	✓	✓	x	✓	✓	✓
Tudor Arch Head	✓	✓	✓	x	x	x
Gothic Arch Head	x	✓	x	x	x	x
Full Arch Head	x	✓	x	x	x	x
Square Head Frame*	✓	✓	✓	✓	✓	✓
Arched Head Frame*	x	✓	x	x	x	x
Side Panels	✓	✓	✓	✓	✓	✓
Fanlight	✓	✓	✓	✓	✓	✓
Paintable Option	✓	x	x	✓	✓	✓

* Refers to outer perimeter of the frame

you wish. This should be ordered separately but please bear in mind that it is not an alternative to a weather bar which is also required.

Glazing

Glazed external doors and side panels are supplied with 14mm double glazing unless otherwise specified as are fanlights. This can be replaced by 6mm safety glass if you prefer and a bullseye option is also available for vision panels. These preferences should be indicated when you order and will be marked on your invoice.

If you wish to install custom glazing in your external doors, you will need to supply the dimensions for this, including thickness, when you order and have this fitted at the same time as the door.

Letterboxes & Catflaps

Letterboxes and cat/dog flaps can be accommodated by most designs and fitted in our workshops. You will need to request this service when you order your external doors, and either order the item from our range of exterior door furniture or supply it before we begin construction.

Measurement

Broadleaf External Doors, Frames and Side Panels are all made to measure. Published prices are for doors and frames to 1000mm x 2100mm, doors to 900mm x 2000mm and side panels to 500mm x 2100mm.

Larger sizes can be accommodated, design permitting, but will carry a supplement. For a quote for an oversized door, just contact your nearest showroom or Broadleaf Head Office.

Accurate measurement is essential for straightforward installation and a weatherproof door and should be done by the intended fitter.

Movement

It is normal for exterior doors made from solid wood to move slightly in response to changes in humidity and temperature.

In the long term, as long as they are regularly maintained with a suitable exterior finish and not directly exposed to the elements, this movement is likely to be minimal, but in the short term (normally after the first winter) seasonal adjustment may be required to take account of 'settling in' movement.

Less movement should be expected from paintable doors but these should also be expected to move slightly in response to climatic conditions and may also require seasonal adjustment.

Seasonal adjustment should be able to be done by the same installer who fits the door at an additional charge.

Timber Selection

The Oak used for our external doors is carefully selected for its particular purpose. Timber used for panelled doors will only feature occasional pin knots. Timber for Manoir, Chateau and Fermette doors may feature some cat's paw and occasional small knots which will be filled before sanding if necessary.

U-Values

We can supply U values for all of our exterior doors upon request. Please ask us if you need or want this information.

Delivery

Please note that due to their weight, our drivers cannot unload external doors alone. If you will not be able to provide assistance, please let us know when you order and we can arrange additional manpower for an additional charge.



Customer Services and Information

Samples

Flooring samples are available from our showrooms or by post. These are complimentary, but if you require more than 3 samples to be sent then there is normally a small charge towards postage.

Please note that due to their size, these samples cannot represent the natural variation that will occur across a floor and should only be taken as a general guide to colour and illustration of dimension.

Delivery

We offer a nationwide premium delivery service which includes unloading into ground floor rooms. We can also arrange delivery to upper or lower floors as an additional service.

Drivers will require capable assistance to unload external doors due to their weight. If you are unable to provide this please notify us when you order and we can arrange for additional manpower for an additional charge.

We also offer delivery by commercial carrier. This is used as standard for smaller, less fragile items and commercial deliveries or where it is more economical for deliveries to more remote areas. These deliveries do not include unloading and for pallet deliveries are kerbside.

Delivery costs vary depending on location and volume but can be quoted on request by our staff.

Equipment Loan

We offer courtesy loan of Tramex concrete encounter meters, relative humidity meters and Portanailer guns to all of our customers through our showrooms. Please ask staff for details. We also hire domestic floor buffers.

Installation Guide

Our installation guidance for both floors and doors can also be found on our website should you wish to refer any fitters or other contractors to it.

Advisory Service

Whether for a single room or an entire home, if you have never purchased a wooden floor or doors before, it can be a daunting prospect. We understand this and our experienced staff are there to help you. They will be happy to offer ideas and advice on what might best suit your particular requirements.

Lead Times

Products that are not made to measure or finished to order are normally kept in stock and can usually be despatched within 5-10 working days depending on delivery schedules. Bespoke items are subject to a longer lead time to allow for their production.

Website

Our website gives us the opportunity to show many more photos than can ever be included practically in this brochure, as well as current design ideas, advice and up to date details of any new products.

We invite you to browse www.broadleaftimber.com

Ordering

You can order from any of our showrooms or our head office. Orders can be made in person, by phone, fax or email.

If you are hoping to match to a previous order please make staff aware of this when you order and ensure that it is noted on any invoice.

Please note that all orders are subject to our full terms of business, which are detailed on written quotes and invoices, and are available on our website.

Payment

Payment is required for all products prior to delivery. To secure your order a deposit of 30% is required for standard products and full payment for made to order products.

Payment for your order can be made by bank transfer, by Visa or Mastercard, by cheque or in cash. Card payments can be made in person in our showrooms or via our online payment page – for security reasons we can no longer take card payments over the phone. Payments made by cheque will normally require 5-8 working days to clear.

Recommended Fitters

Broadleaf have a network of recommended fitters, independent craftsmen who are familiar with our products and installation guidelines and whose workmanship is constantly reviewed to ensure it meets the standards we expect. They are generally based near our showrooms but most will travel. Should you require installation services our staff will be happy to arrange for one of them to contact you.

Alternatively, we are happy to offer advice or information to you or your own tradesmen. Please make sure that whoever undertakes the installation has read our installation guide and follows its guidance.

Storage

All products made from kiln dried timber must be stored inside. They should not be stored near any concrete or plaster that is not fully dry and has not been heated for at least 2 weeks. Doors must be stored flat but not in direct contact with the floor. Flooring must be unwrapped and lattice stacked.

Specifications

Specifications of flooring and doors are detailed in the relevant information sections. Specifications of accessories are included in the relevant product pages.

These are correct at the time of printing but from time to time it is necessary for us to change product specifications without notice, so please confirm them at the time of order. If you have any queries, our staff will be pleased to help you.

Sustainability

At Broadleaf we value the natural environment and are committed to promoting responsible forestry. We hold FSC Chain of Custody Certification (FSC-C145463) and our timber is sourced from well managed forests, the majority of which are FSC or PEFC certified. The FSC and PEFC are independent, international bodies which set standards for forest management and chain of custody procedures and certify forests and companies that meet these.

Further information can be found at www.fsc.org and www.pefc.org. Please let us know when you order if you have particular sourcing requirements.





Showrooms

Broadleaf Bath

134 - 136 Walcot Street
BA1 5BG
Tel: 01225 463 464
bath@broadleaftimber.com

Broadleaf Cardiff

71 Eastgate, Cowbridge
CF71 7AB
Tel: 01446 771 375
cardiff@broadleaftimber.com

Broadleaf Cheltenham

The Courtyard, Montpellier
GL50 1SR
Tel: 01242 252 202
cheltenham@broadleaftimber.com

Broadleaf Henley

13 Reading Road
RG9 1AB
Tel: 01491 411 444
henley@broadleaftimber.com

Broadleaf Llandeilo

7 King Street
SA19 6BA
Tel: 01558 822 882
llandeilo@broadleaftimber.com

Broadleaf London

715 Fulham Road
SW6 5UL
Tel: 0207 371 0088
london@broadleaftimber.com

Broadleaf Eymet (SW France)

12 Rue du Veau
24500 Eymet
Tel: 00 33 (0) 5 53 22 46 84
eymet@broadleaftimber.com

Broadleaf Head Office and Design

Cil Yr Ychen Industrial Estate
LLandybie SA18 3GY
Tel: 01269 851 910
sales@broadleaftimber.com

Stockists

Broadleaf Aberdeen

@ Treehouse
Midmar, Aberdeenshire
AB51 7NB
Tel: 01330 830 101
aberdeen@broadleaftimber.com

Broadleaf Dublin

@ Tilestyle
Ballymount Retail Centre
Ballymount Road Upper
Dublin 24
Tel: 00 353 1 855 5200
dublin@broadleaftimber.com